

DURASOUND TECHNICAL DETAILS

MANUAL OPERATION OVER 3.4m TALL

HEAD & SILL DETAILS

P2 Standard

WALL JAMB DETAILS

P3 Standard

FLOATING WALL JAMB DETAILS

P4 Single Parting

P5 Bi-Parting

ELEVATIONS

P6 Single Parting

P7 Bi-Parting

P8 Single Parting Pocket

P9 Bi-Parting Pocket



1. 10mm threaded rod with nuts and washers by main contractor.
Spacing: 600mm centres through opening, 300mm in stack depth areas.

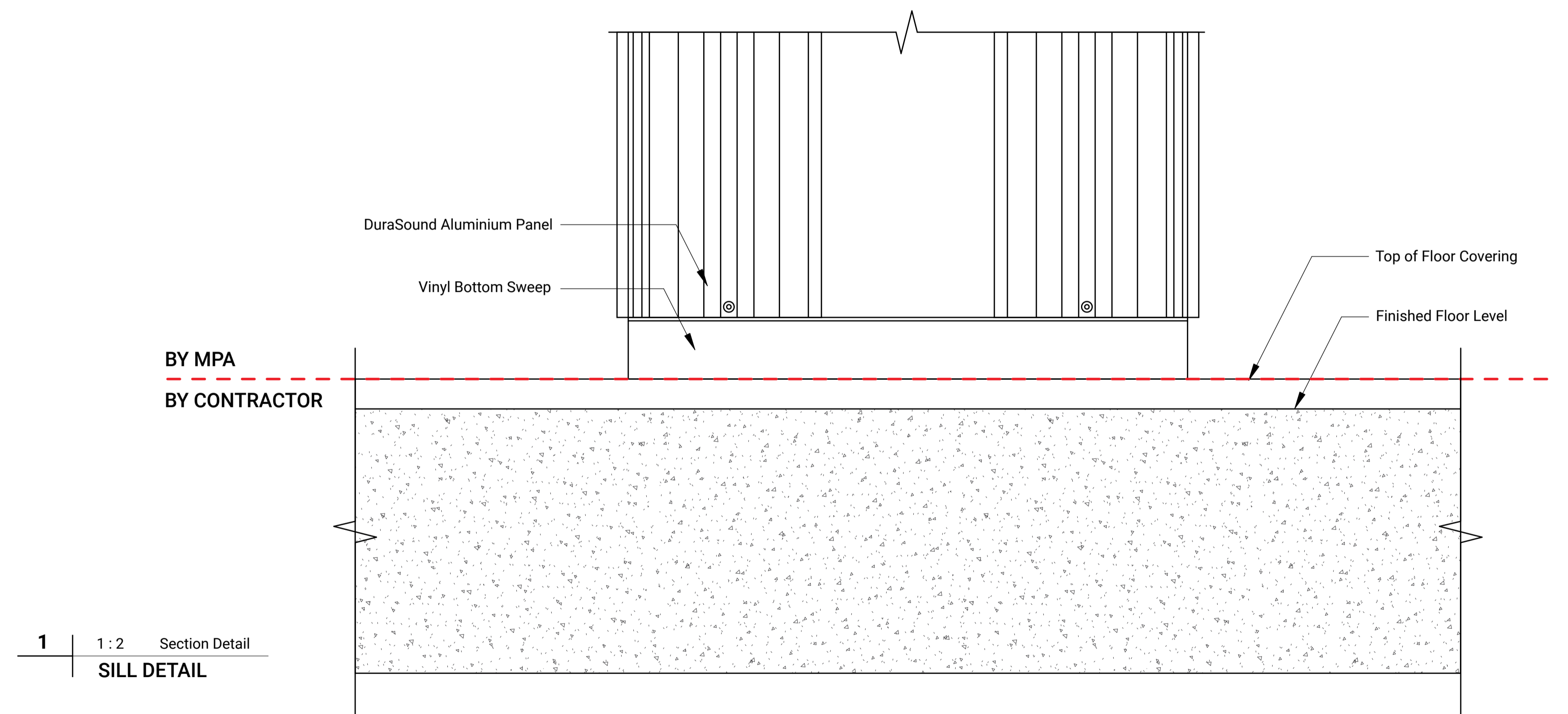
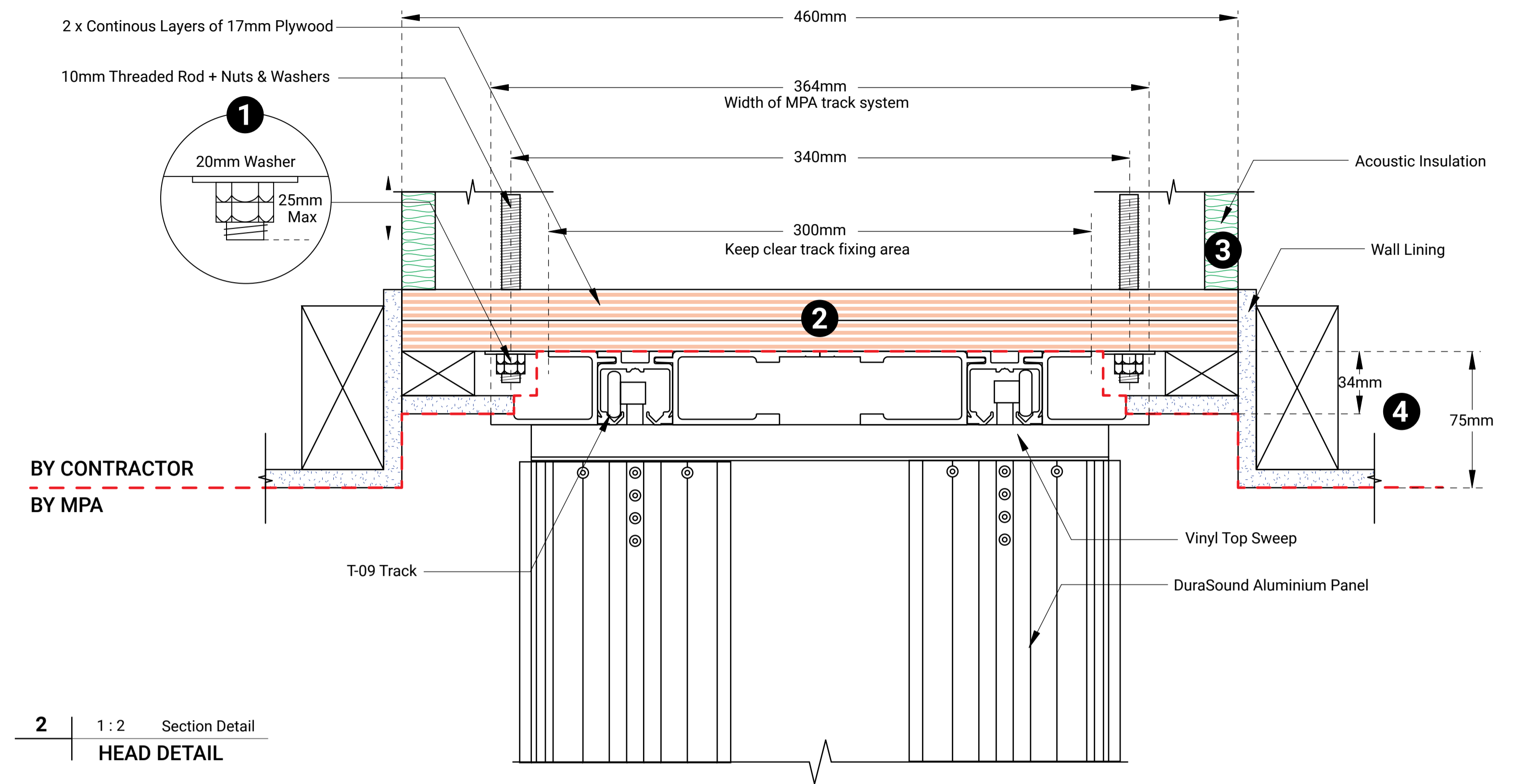
NOTE: All fixings must be kept clear of "Track Fixing Area"

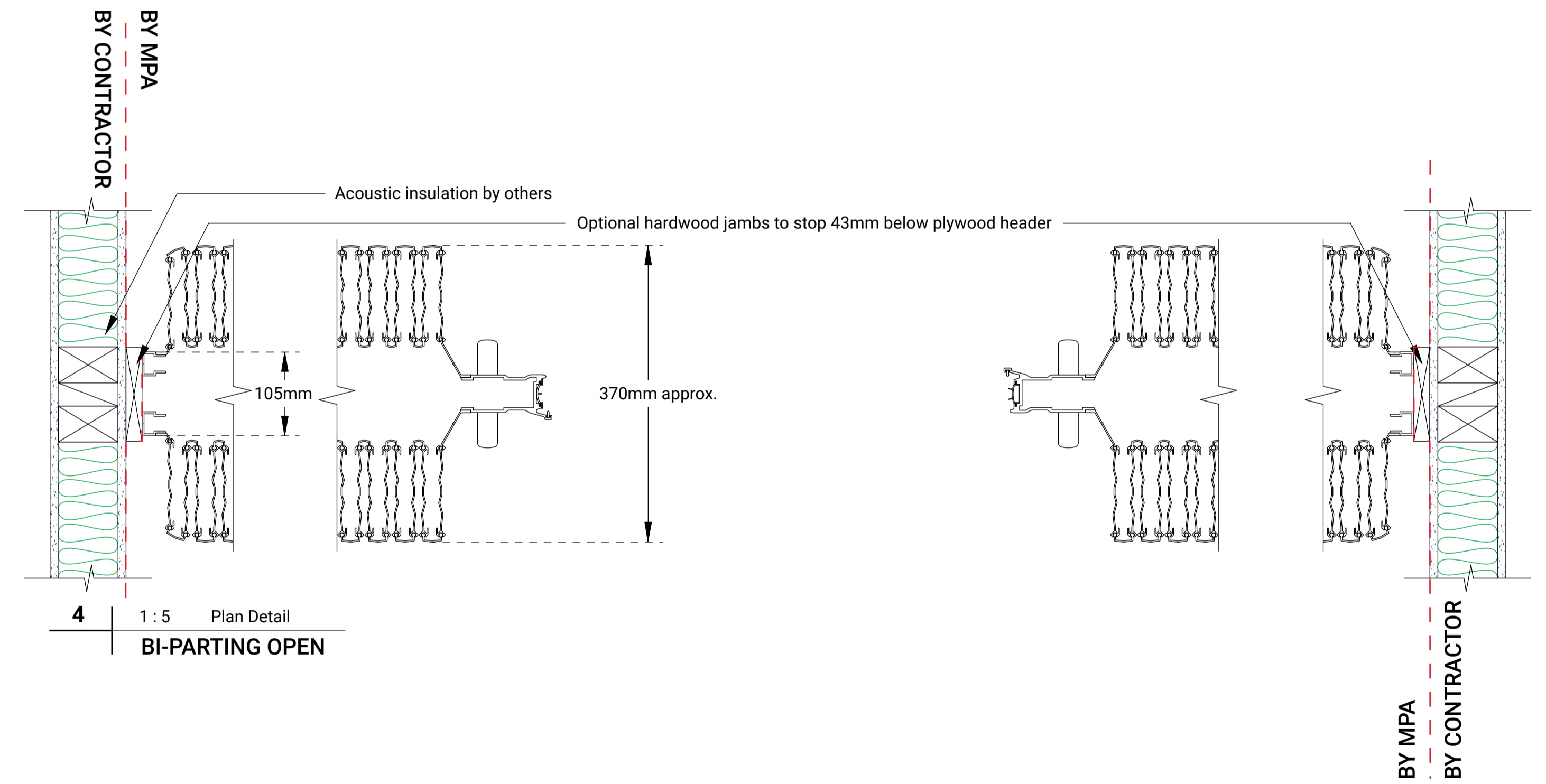
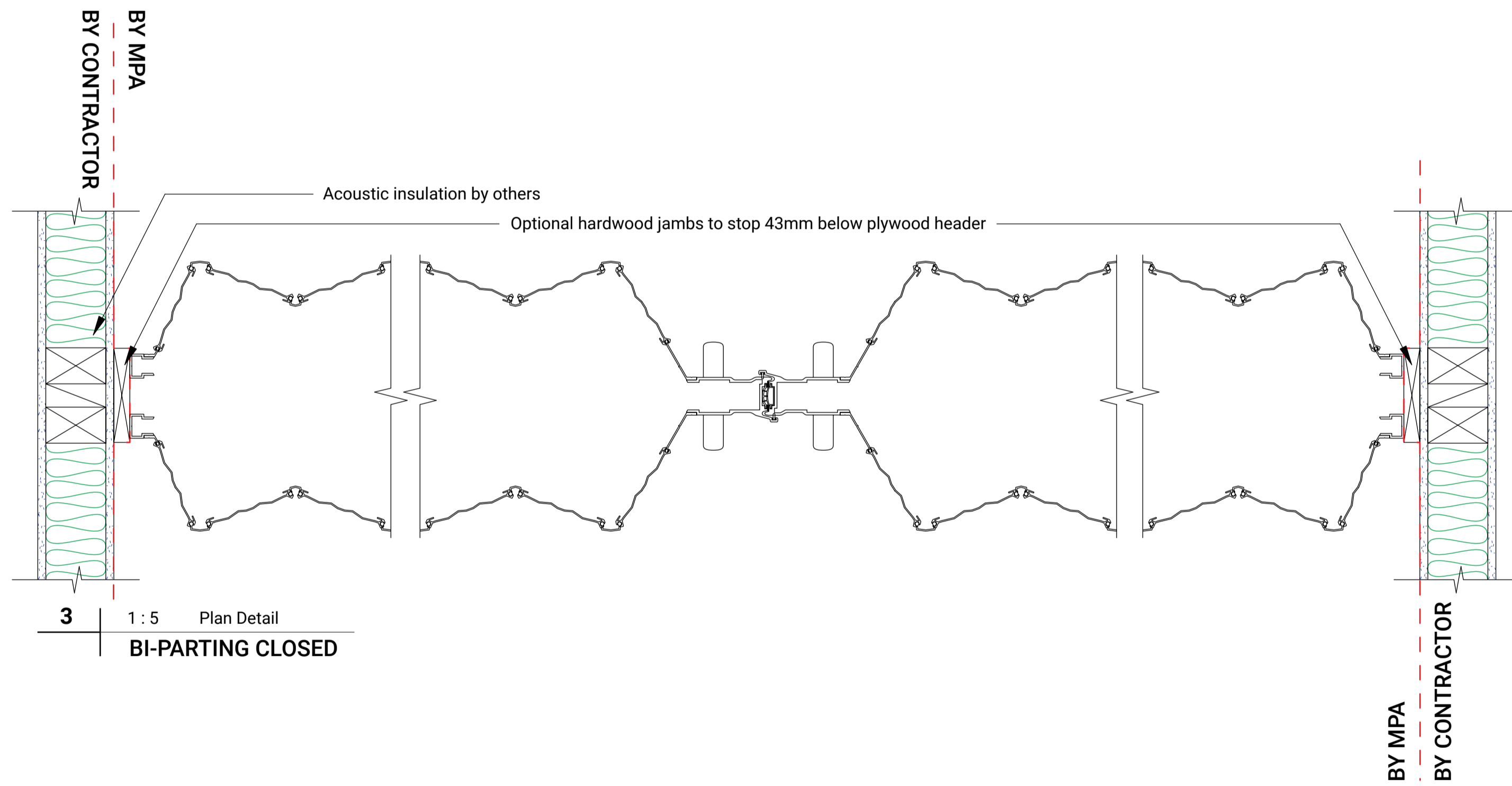
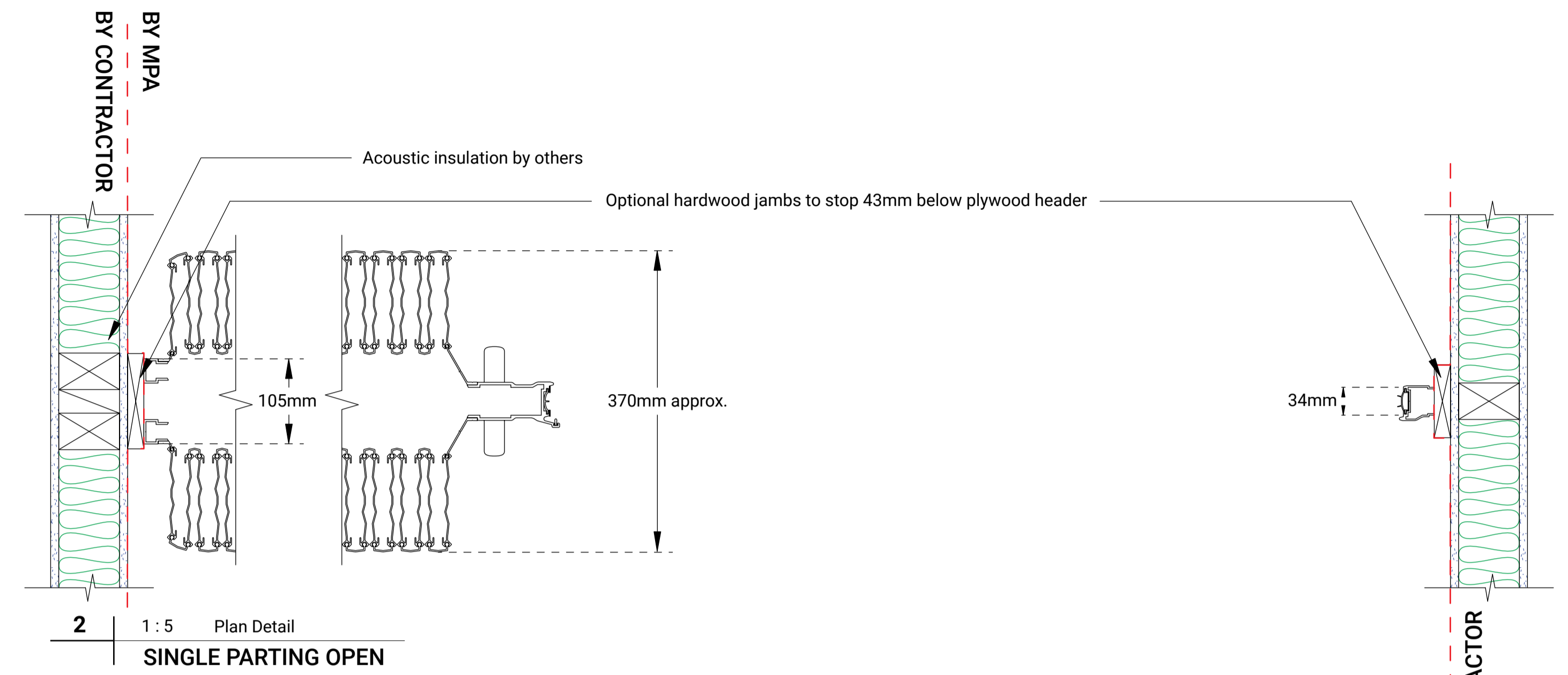
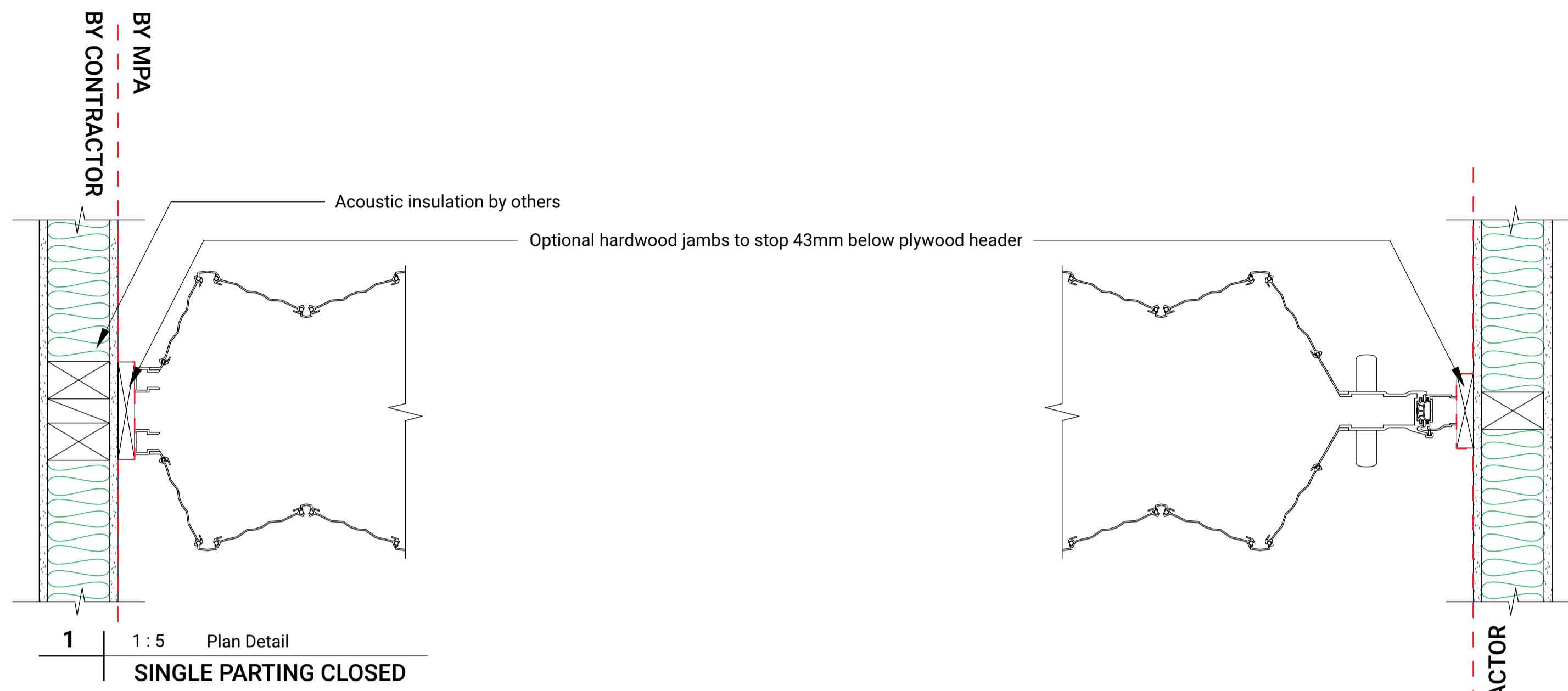
2. Two (2) Layers 17mm x 460mm continuous plywood, screwed and glued, to be parallel with floor. Maximum level tolerance of +/- 5mm. By main contractor.

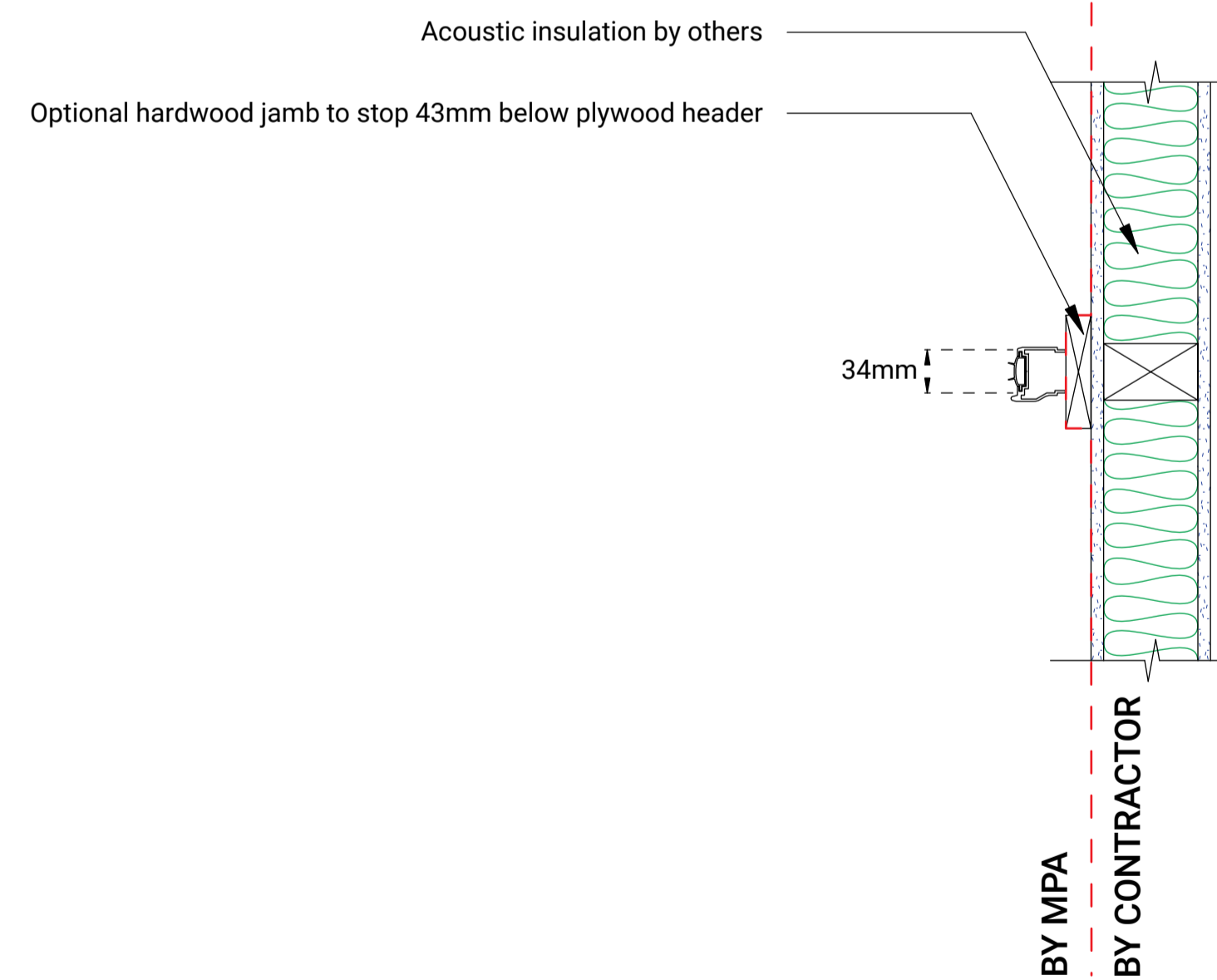
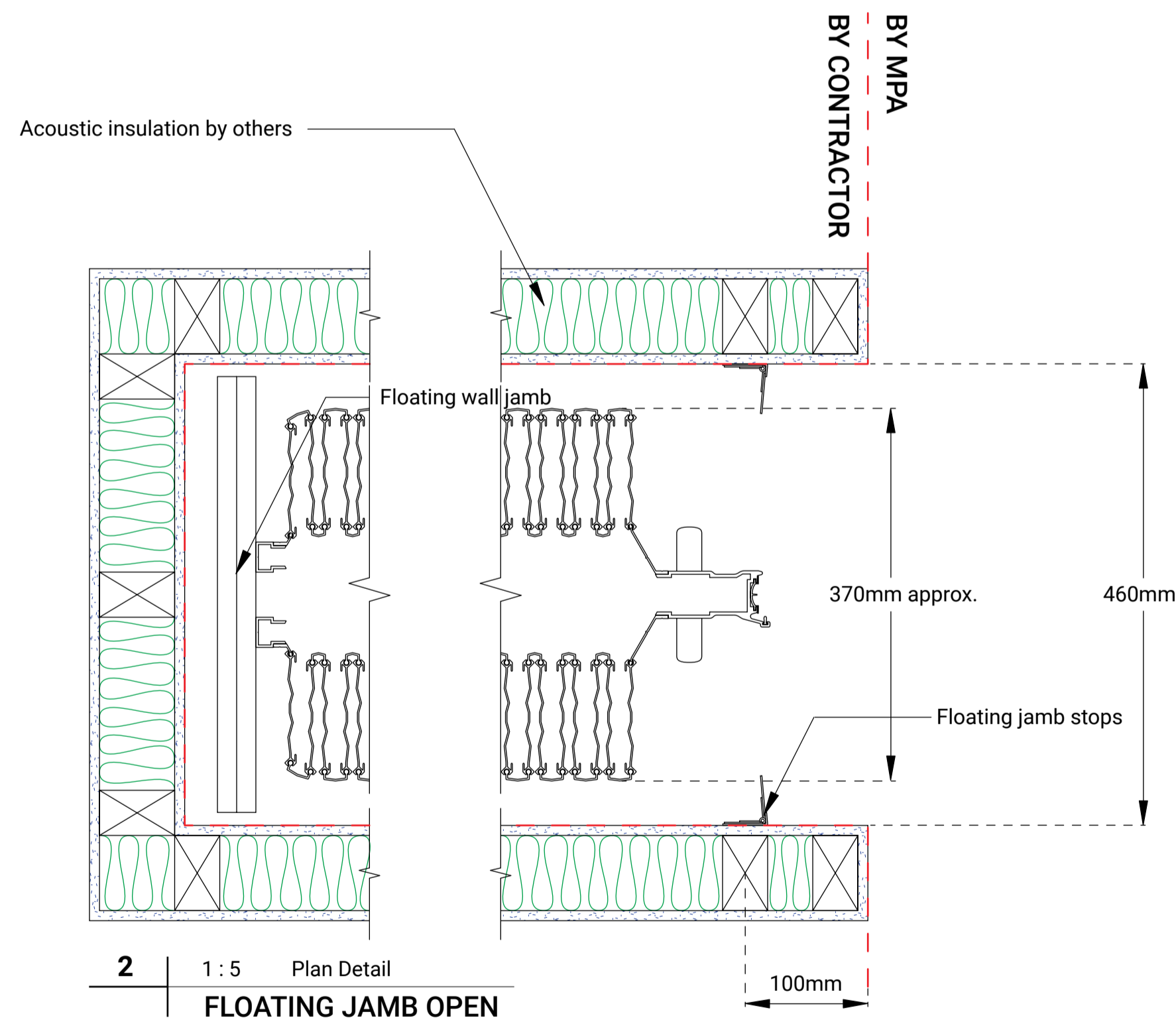
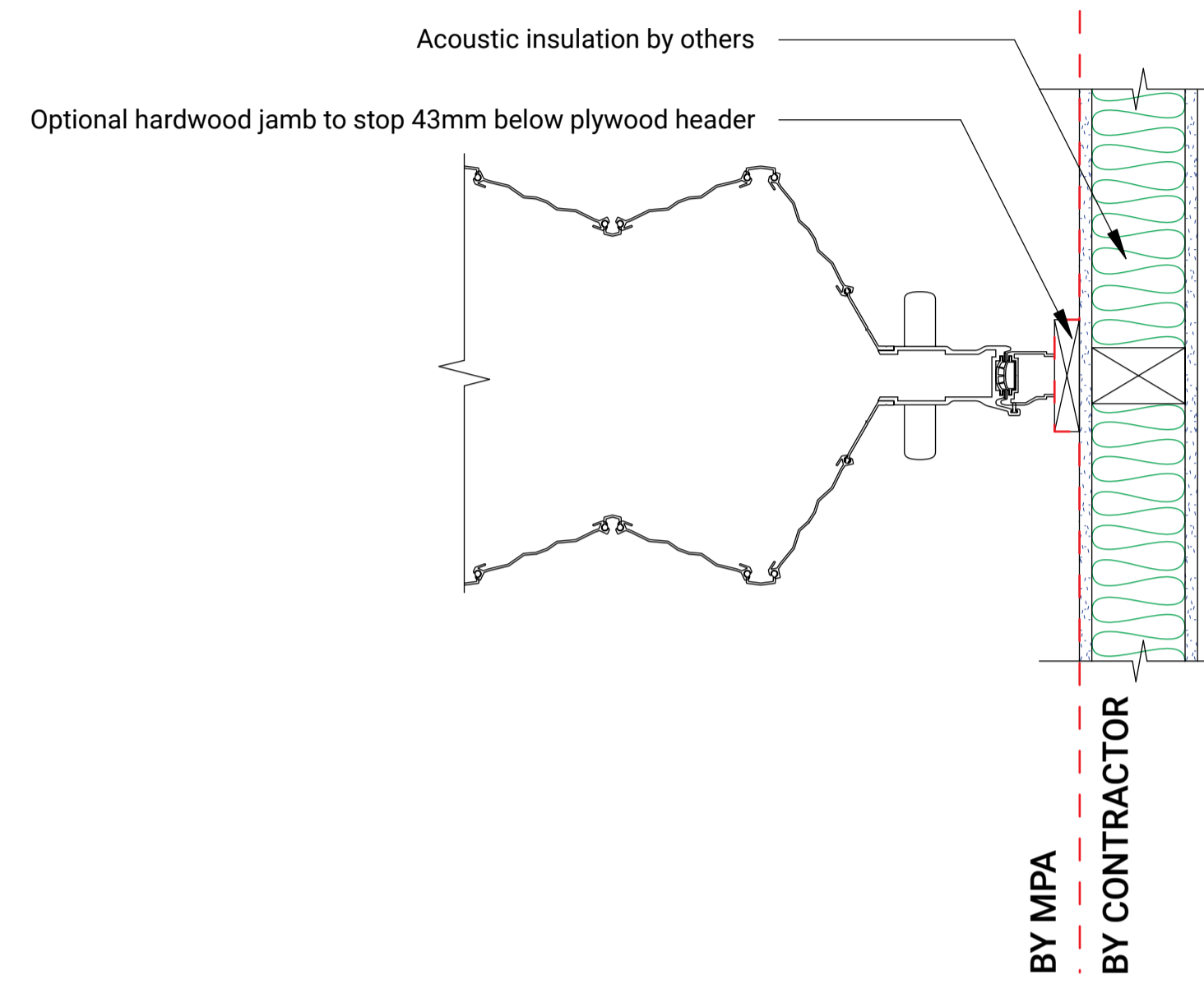
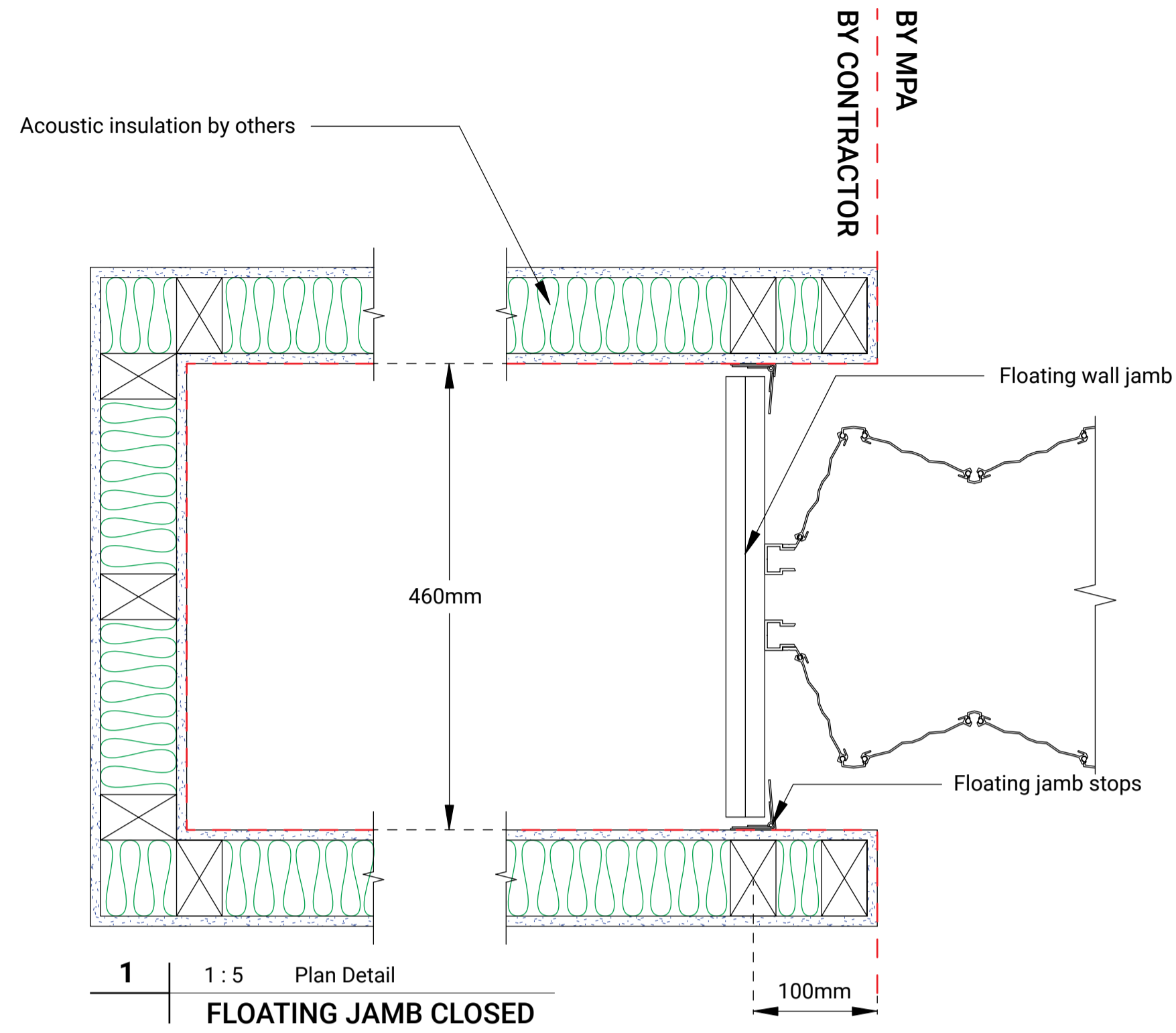
3. Sound proofing: Insulate above header as required for sound proofing "by others".

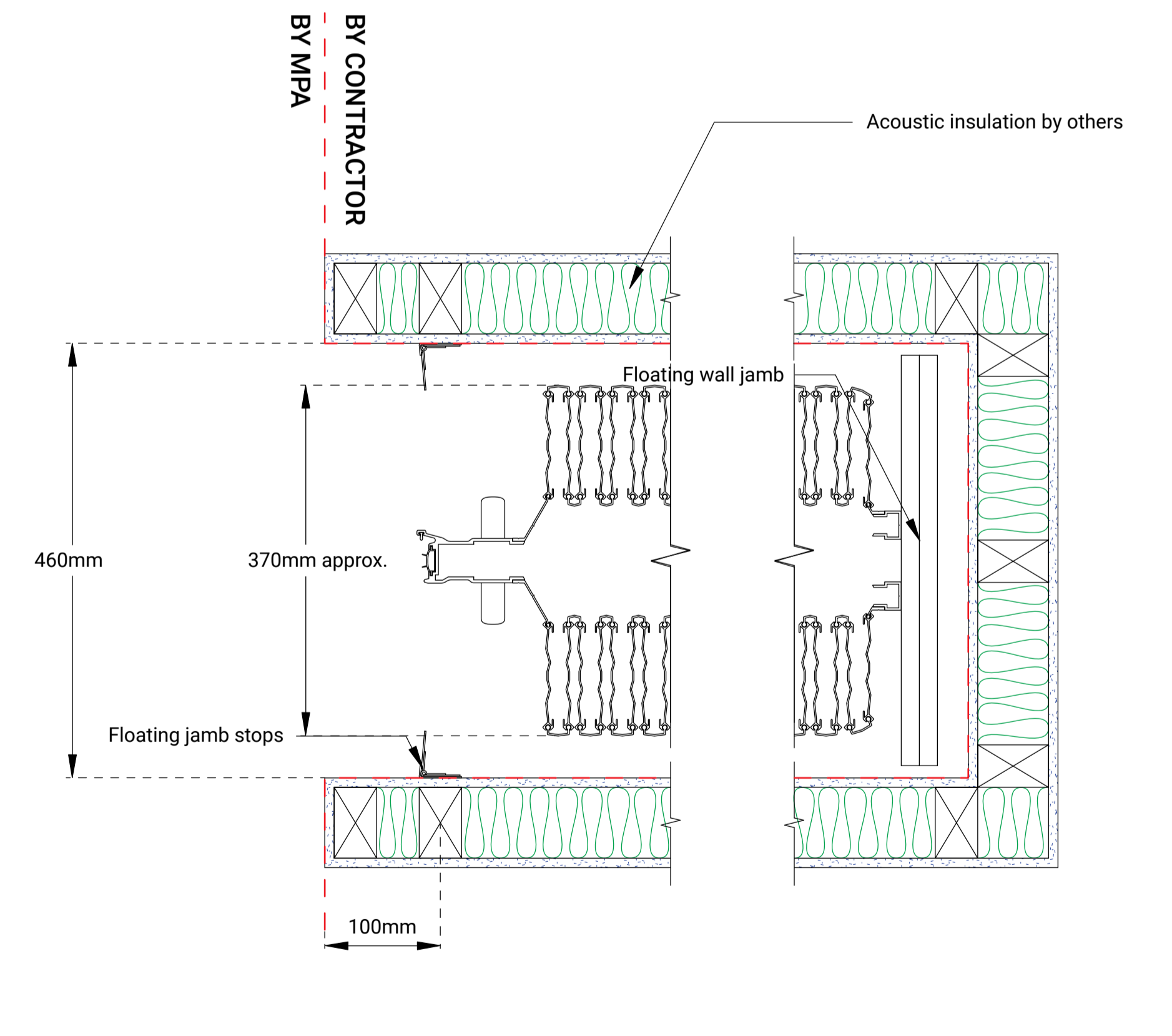
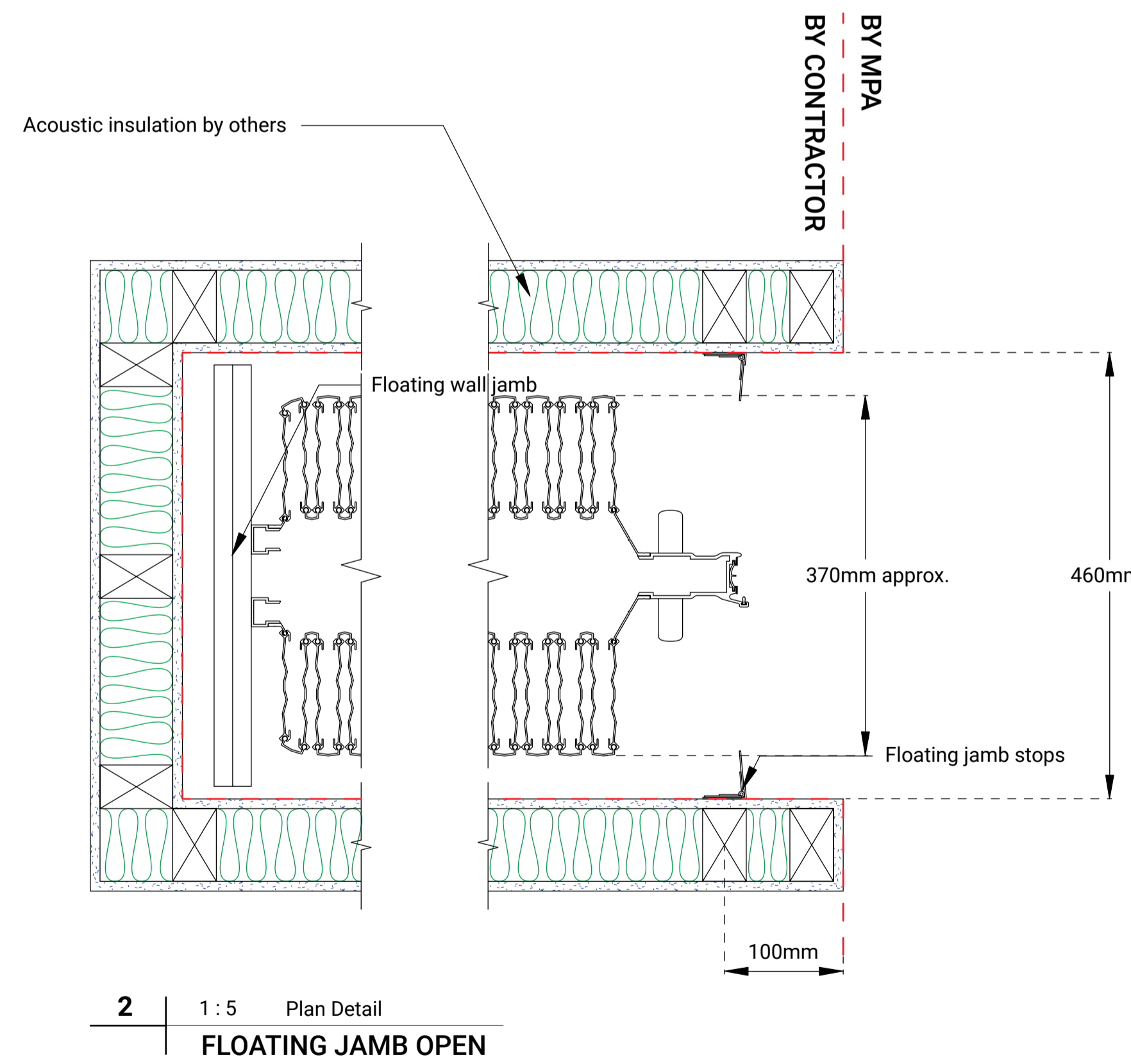
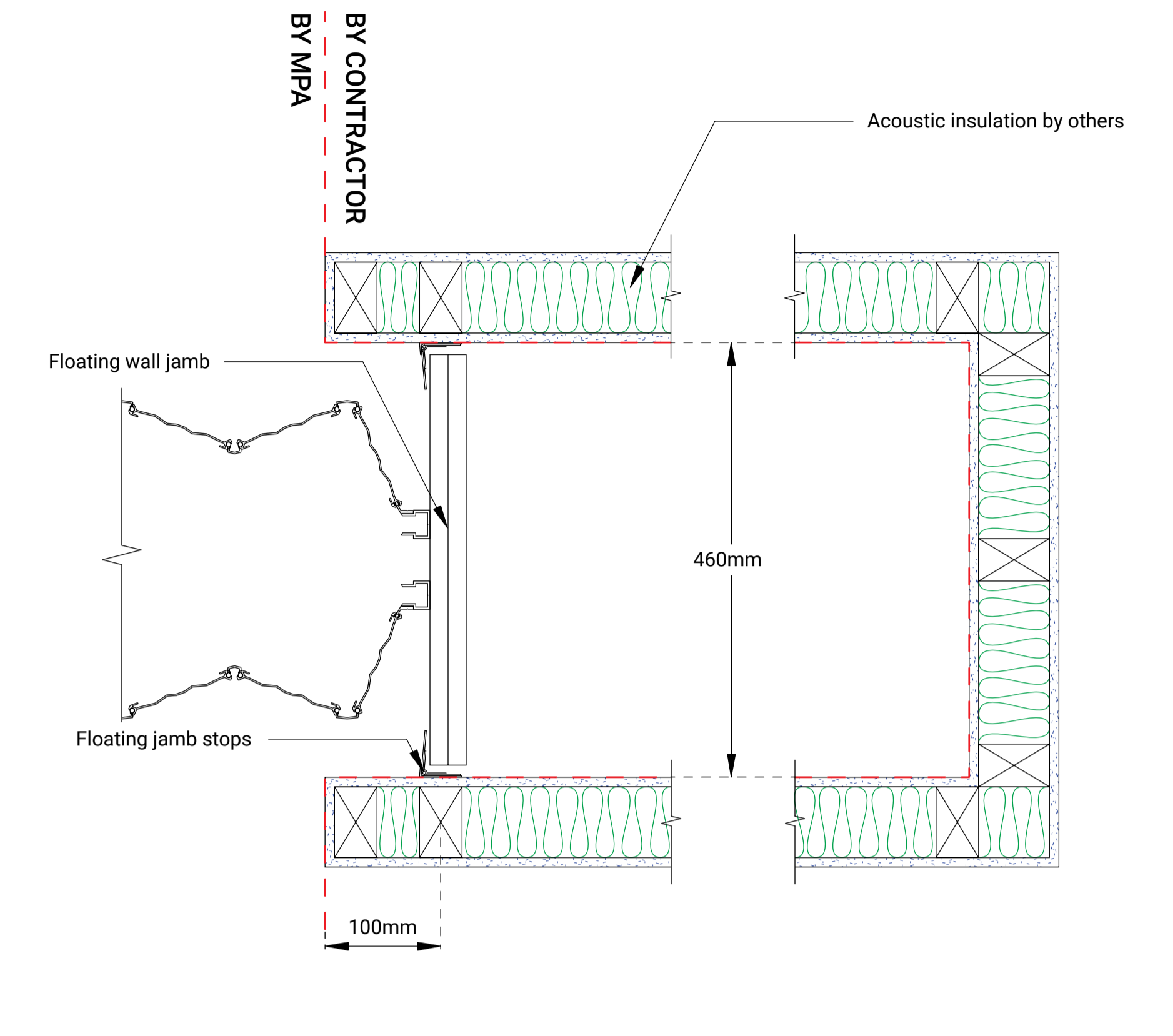
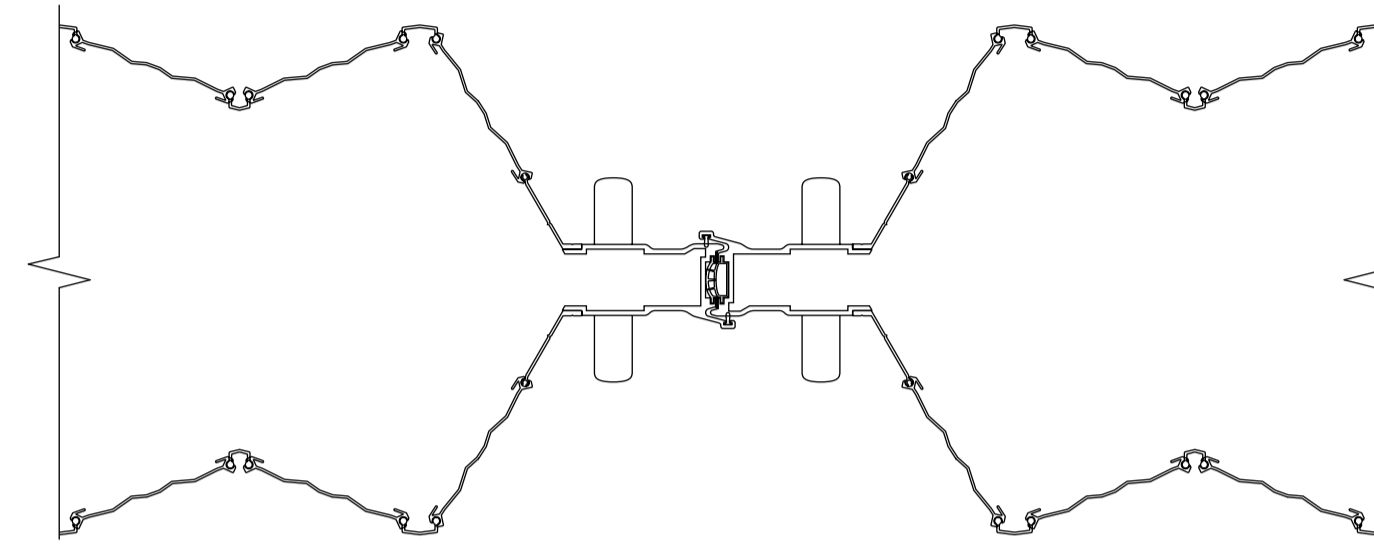
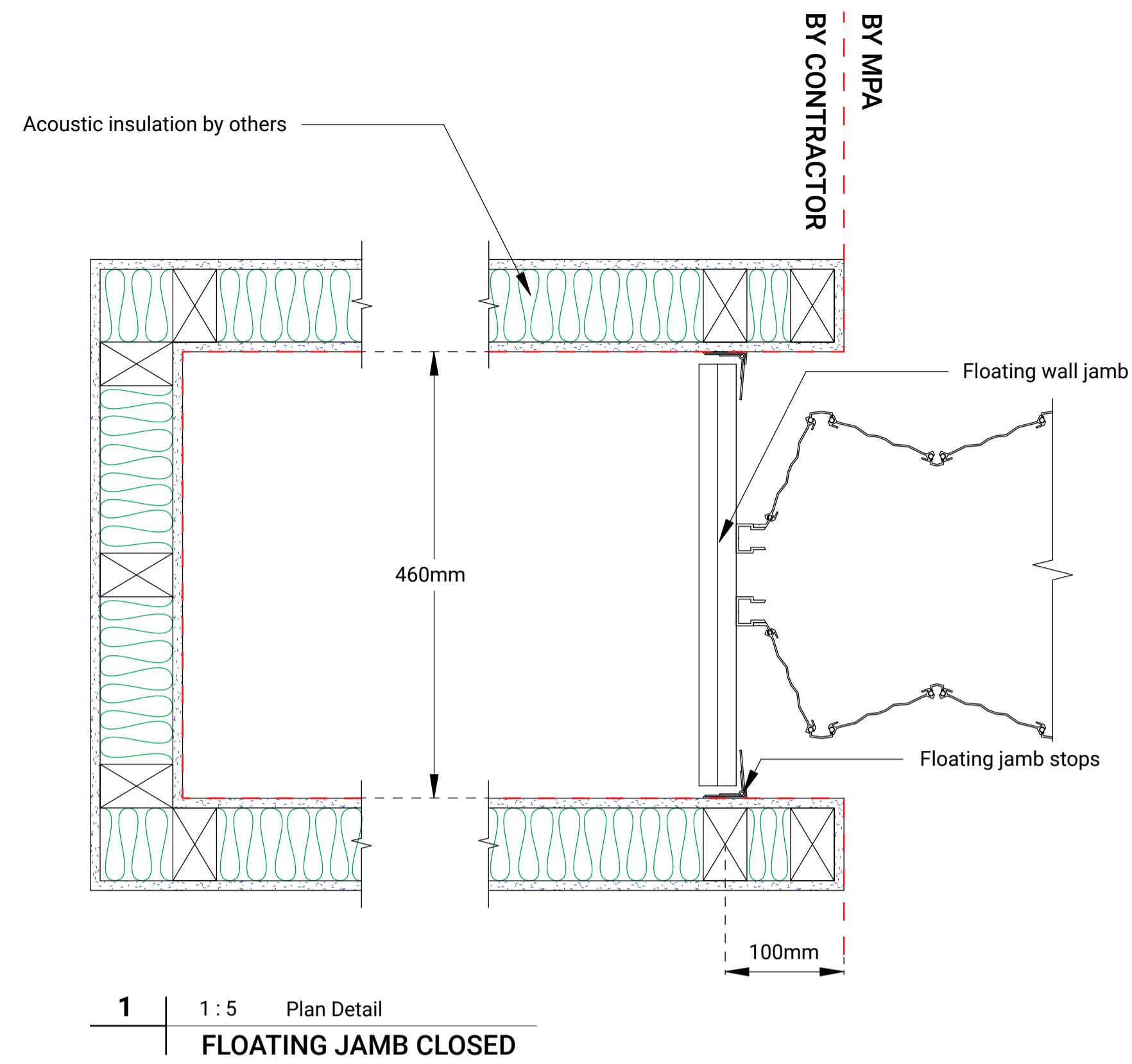
4. Plywood head recessed anywhere between 34 - 75mm above the ceiling.

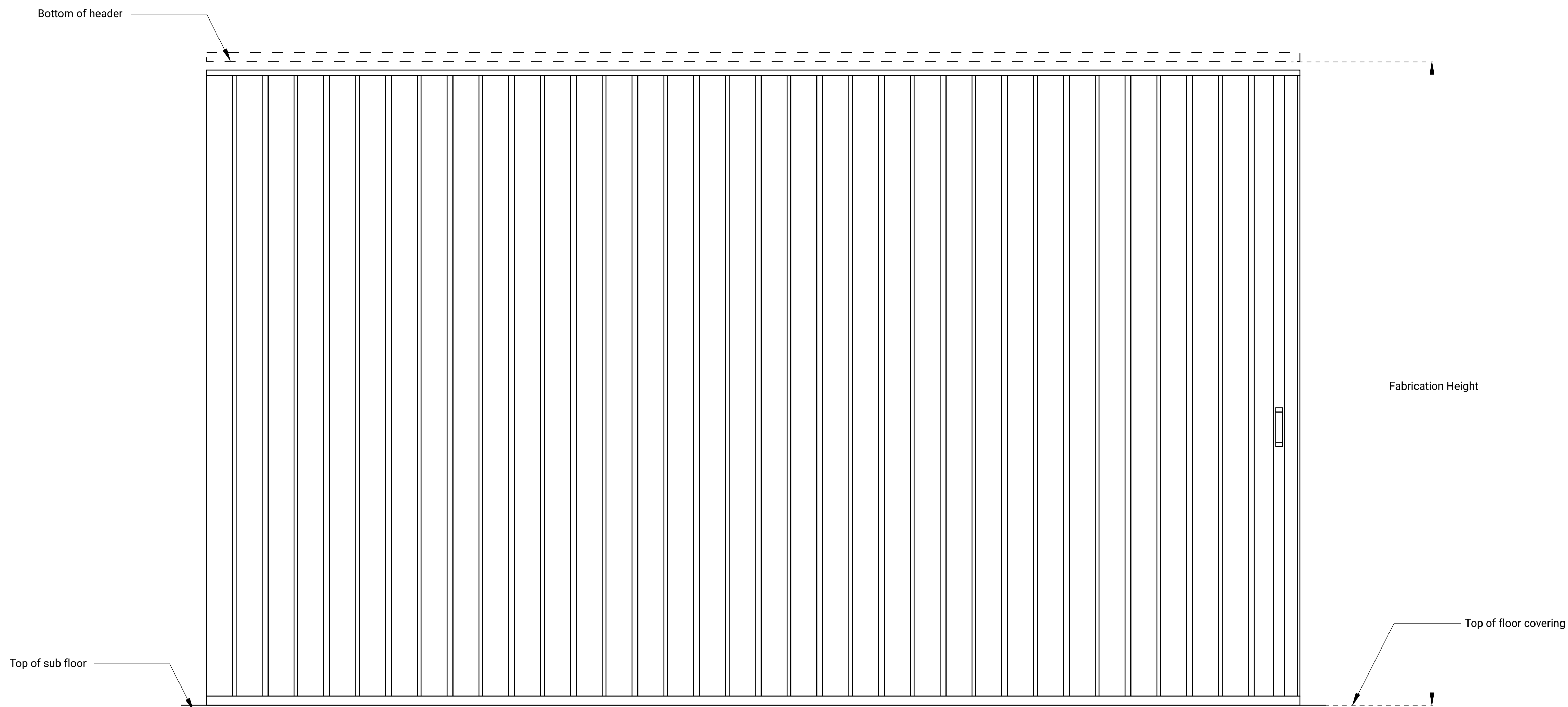
NOTE: 34mm recess will set MPA tracks at ceiling height.



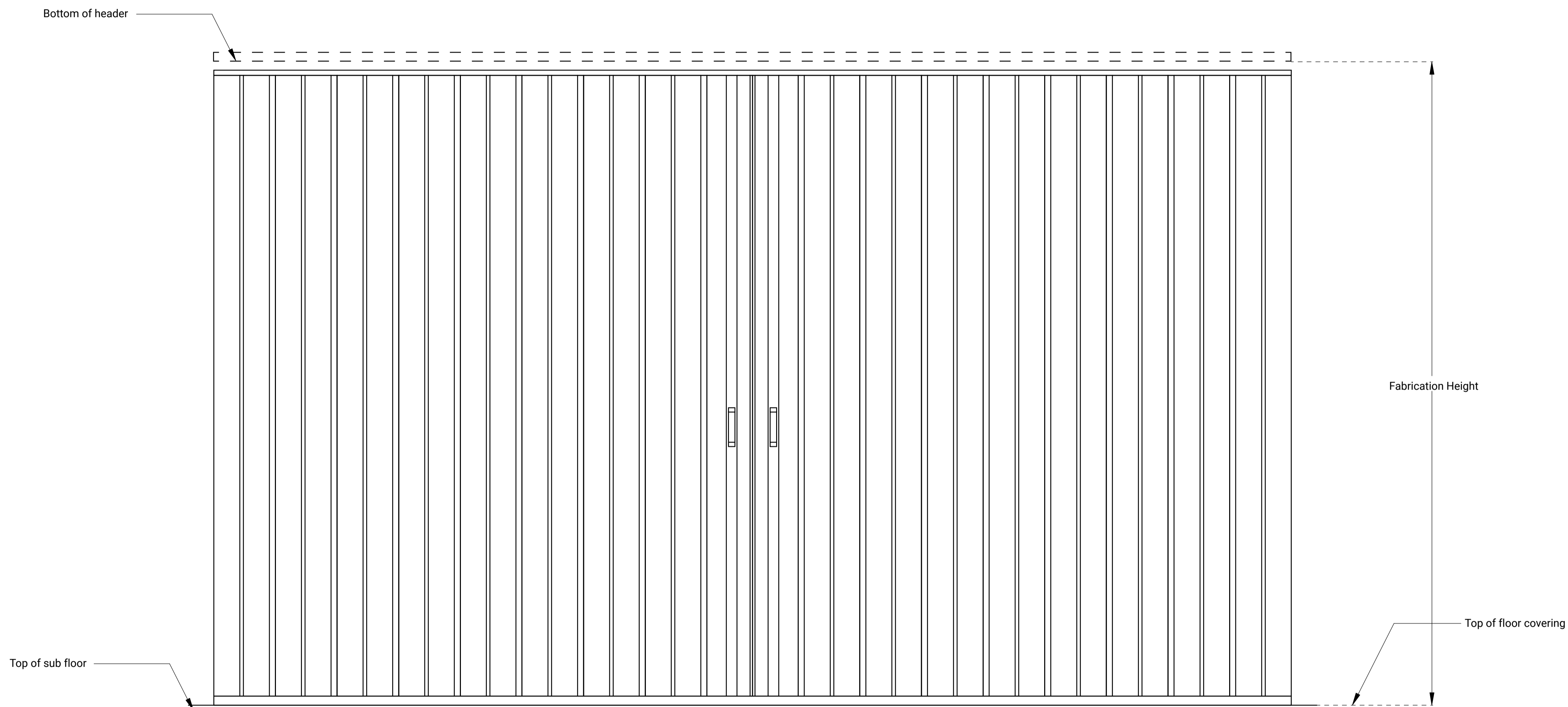




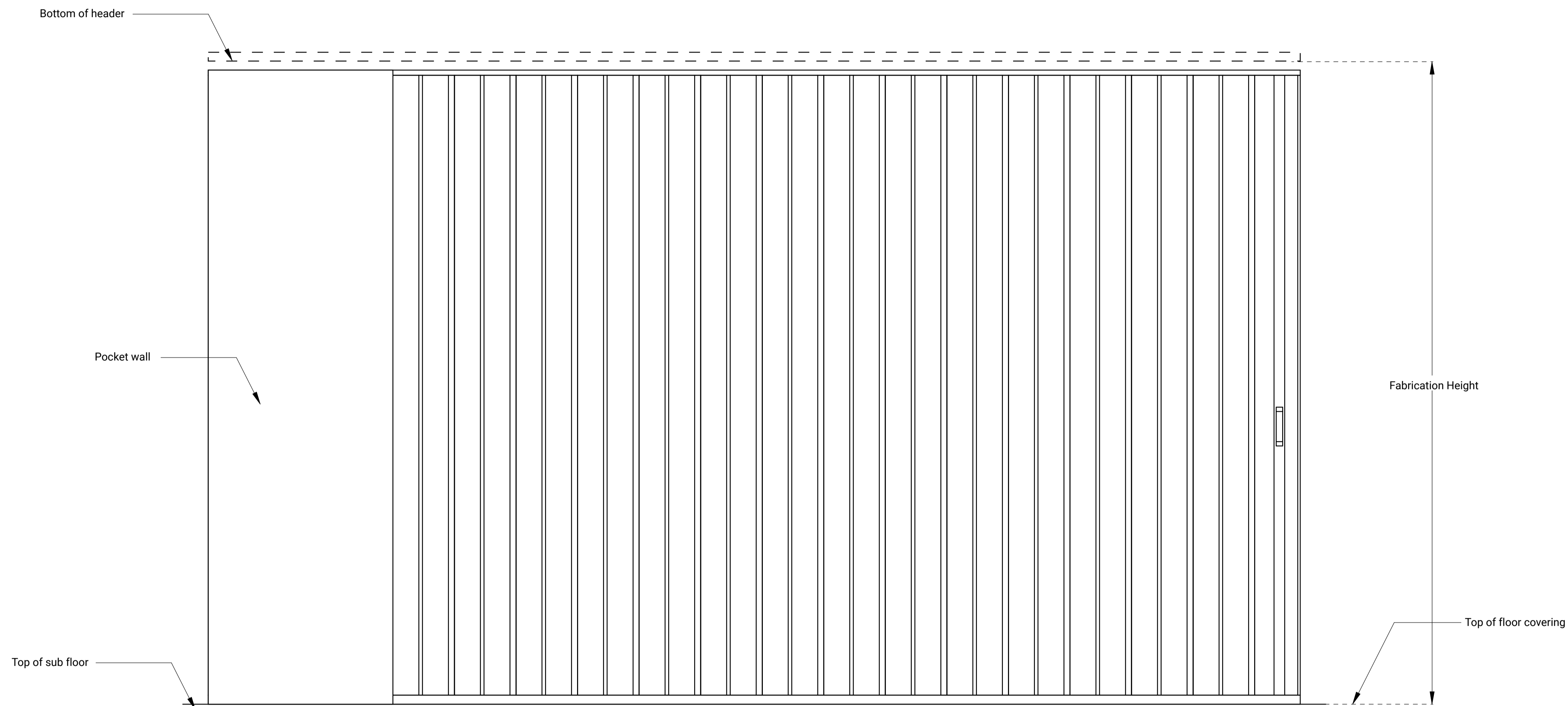




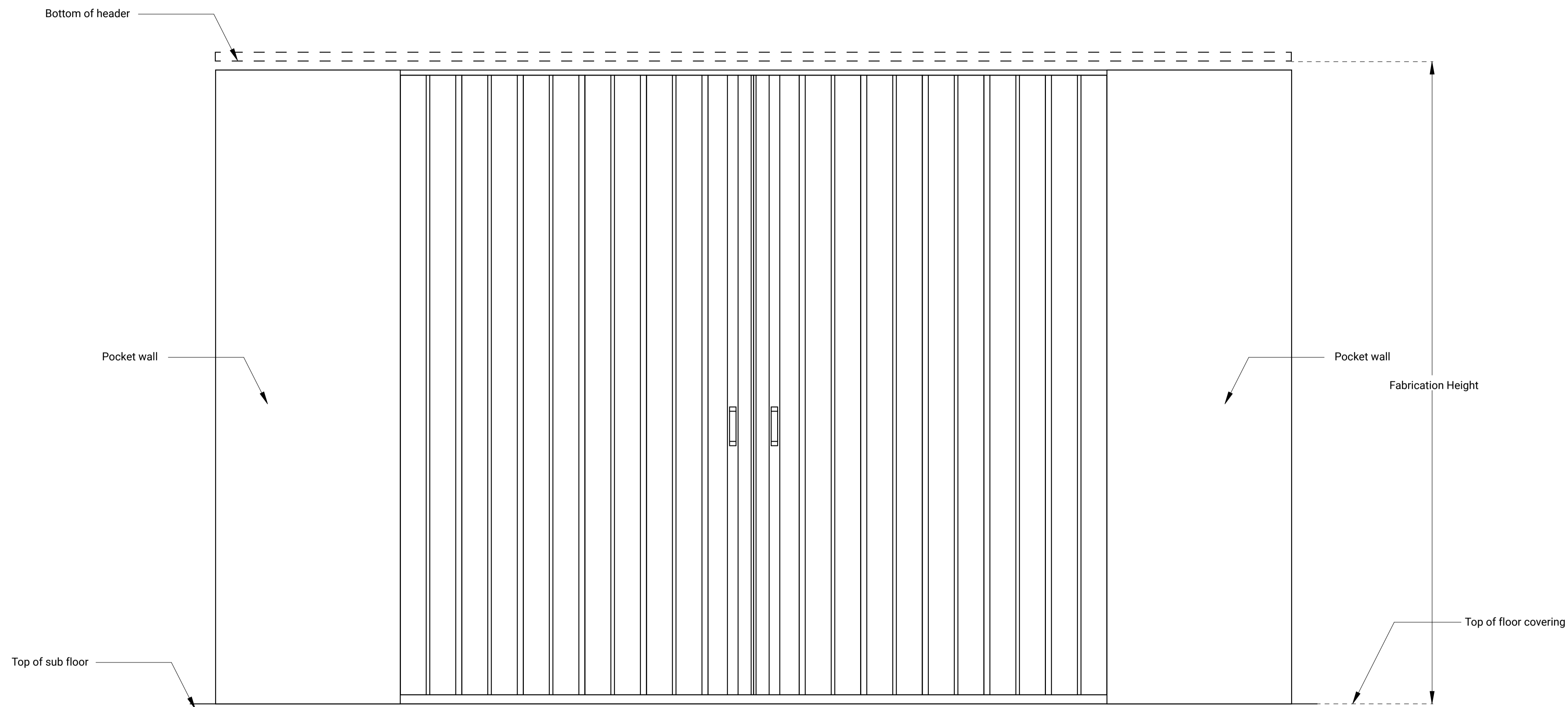
1 | 1 : 10 Elevation
SINGLE PARTING CLOSED



1 | 1 : 10 Elevation
BI-PARTING CLOSED



1 | 1 : 10 Elevation
 SINGLE PARTING POCKET CLOSED



1 | 1 : 10 Elevation
BI-PARTING POCKET CLOSED