

DURAFLEX TECHNICAL DETAILS



HEAD & SILL DETAILS

P2	Standard
P3	Recessed
P4	Bulkhead
P5	Suspended Ceiling
P6	Flush Track
P7	Narrow Track

WALL JAMB DETAILS

P8	Standard
----	-------	----------

FLOATING WALL JAMB DETAILS

P9	Single Parting
P10	Bi-Parting

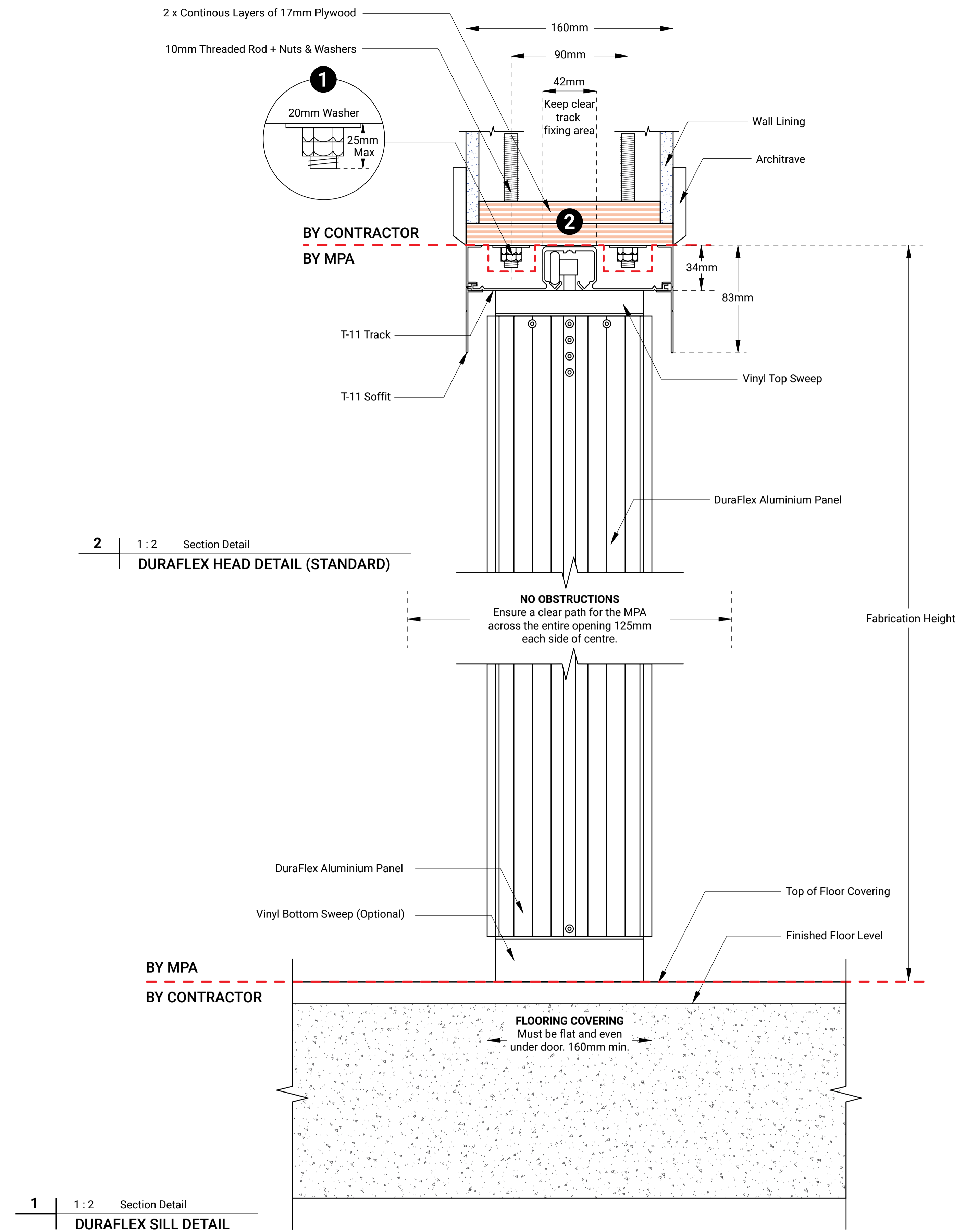
ELEVATIONS

P11	Single Parting
P12	Bi-Parting
P13	Single Parting Pocket
P14	Bi-Parting Pocket

1. 10mm threaded rod with nuts and washers by main contractor.
Spacing: 600mm centres through opening, 300mm in stack depth areas.

NOTE: Threaded Rod is not necessary where adequate fixing of the ply is available. Ply must be fixed in a manner to support the weight of this door at 9kgm².

2. Two (2) Layers 17mm x 160mm continuous plywood, screwed and glued, to be parallel with floor. Maximum level tolerance of +/- 5mm.
By main contractor

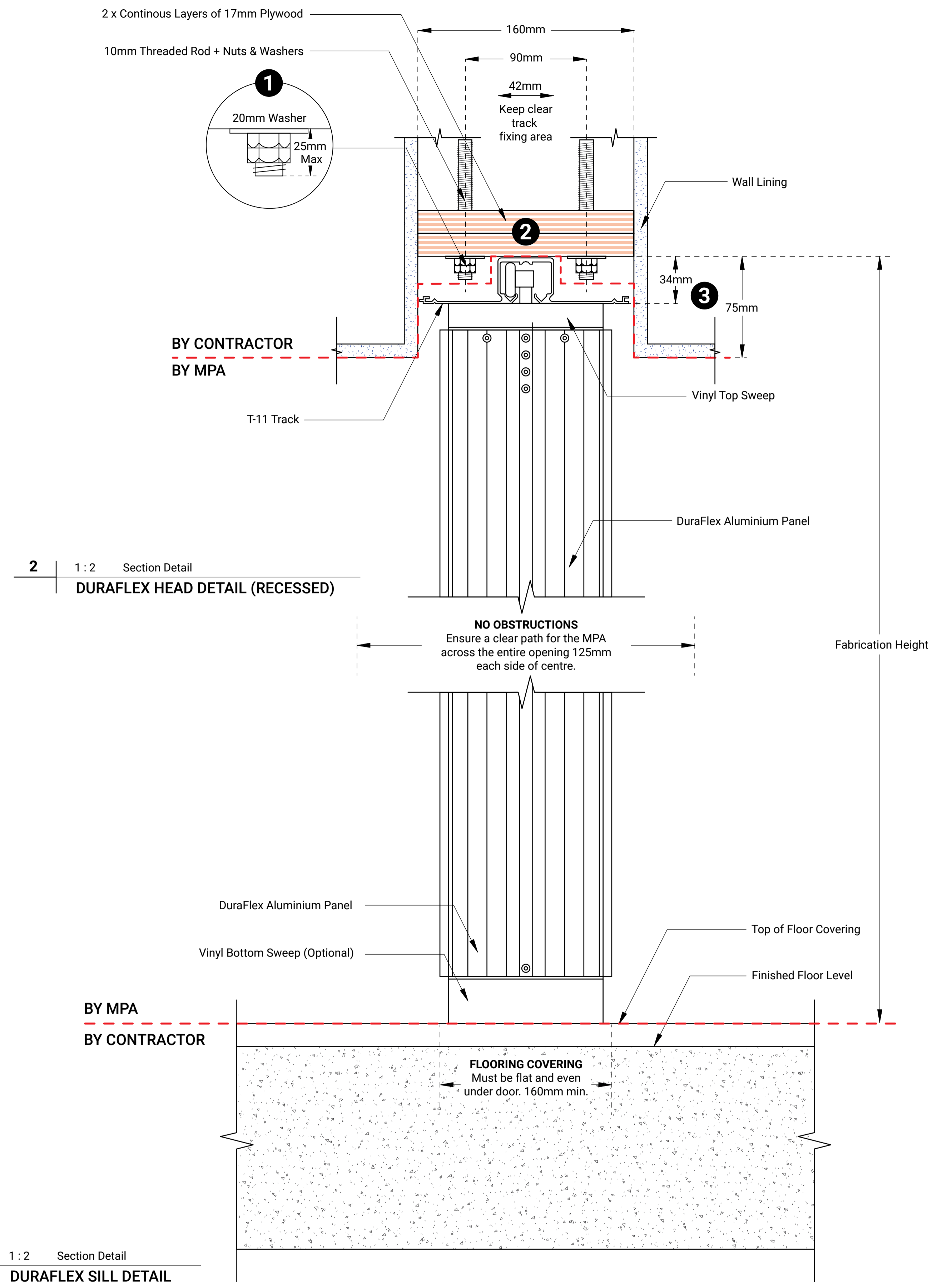


1. 10mm threaded rod with nuts and washers by main contractor.
Spacing: 600mm centres through opening, 300mm in stack depth areas.

3. Plywood head recessed anywhere between 34 - 75mm above the ceiling. 34mm recess will set MPA tracks flush with ceiling.

NOTE: Threaded Rod is not necessary where adequate fixing of the ply is available. Ply must be fixed in a manner to support the weight of this door at 9kgm².

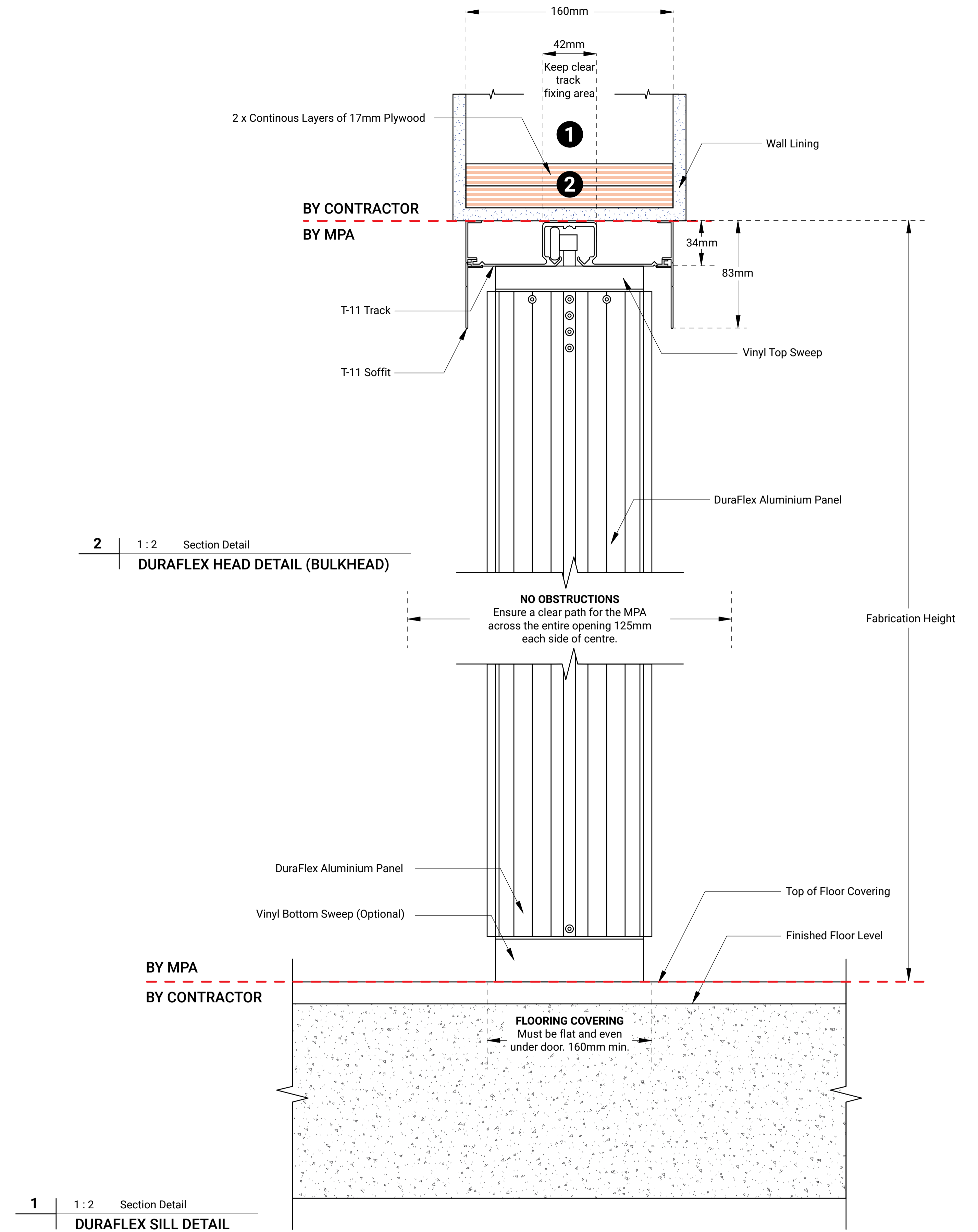
2. Two (2) Layers 17mm x 160mm continuous plywood, screwed and glued, to be parallel with floor. Maximum level tolerance of +/- 5mm. By main contractor.



1. Plywood to be sufficiently fixed into bulkhead framing to carry the weight of this door 9Kg/m². By main contractor.

NOTE: Ensure extra fixing in stack depth areas.

2. Two (2) Layers 17mm x 160mm continuous plywood, screwed and glued, to be parallel with floor. Maximum level tolerance of +/- 5mm. By main contractor.



1. 10mm threaded rod with nuts and washers by main contractor. Spacing: 600mm centres through opening, 300mm in stack depth areas.

NOTE: Threaded Rod is not necessary where adequate fixing of the ply is available. Ply must be fixed in a manner to support the weight of this door at 9kgm².

NOTE: All fixings to be kept clear of track fixing area.

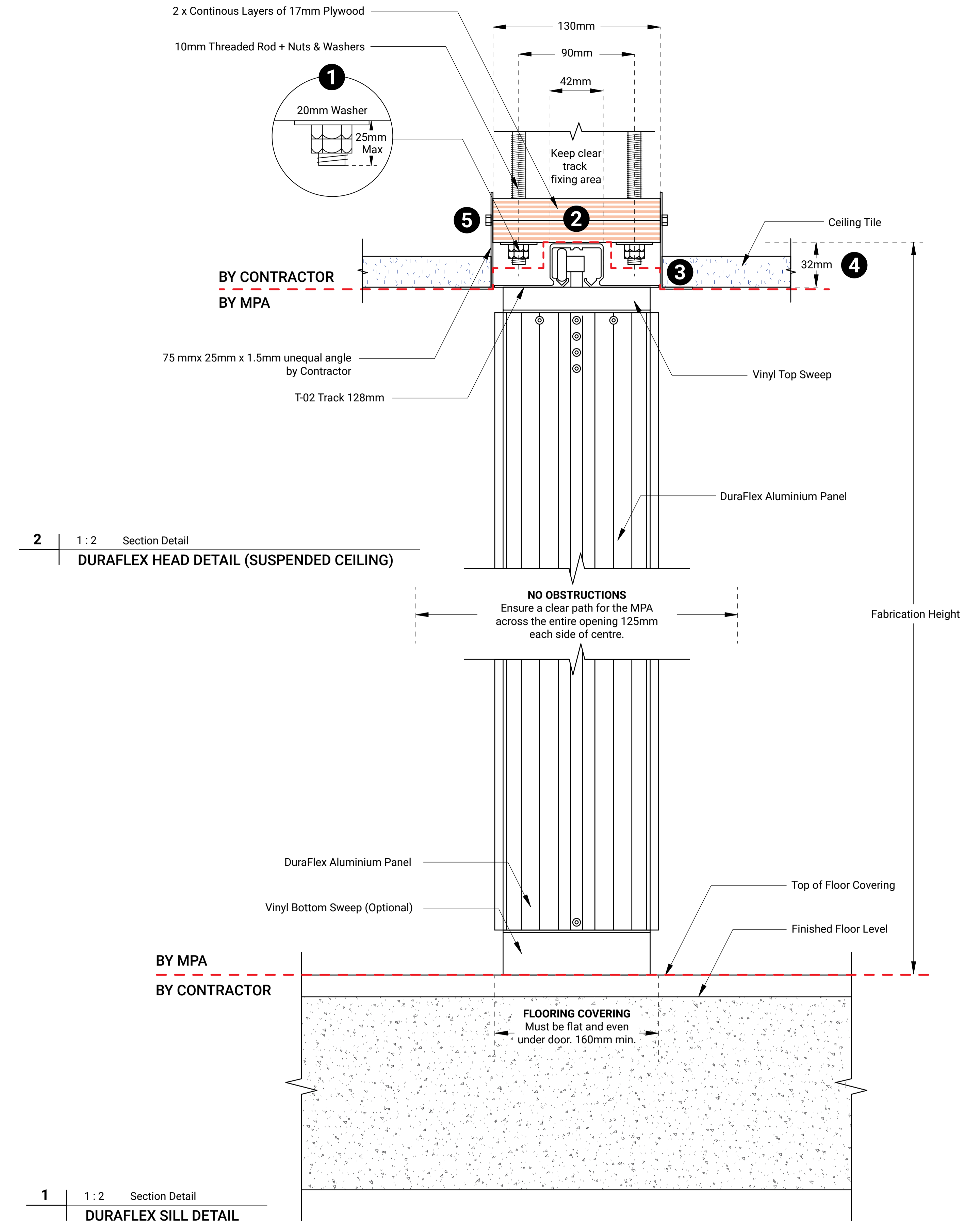
2. Two (2) Layers 17mm x 128mm continuous plywood, screwed and glued, to be parallel with floor. Maximum level tolerance of +/- 5mm. By main contractor.

3. Suspended ceiling grid to be self supported and not held up by MPA track.

4. u/s plywood to be recessed 32mm above ceiling grid.

5. 75 x 25 x 1.5mm Unequal Angle powder coated white – by contractor.

NOTE: Unequal Angle can be purchased from MPA if requested. Install of Unequal Angle is by contractor when preparing the header.



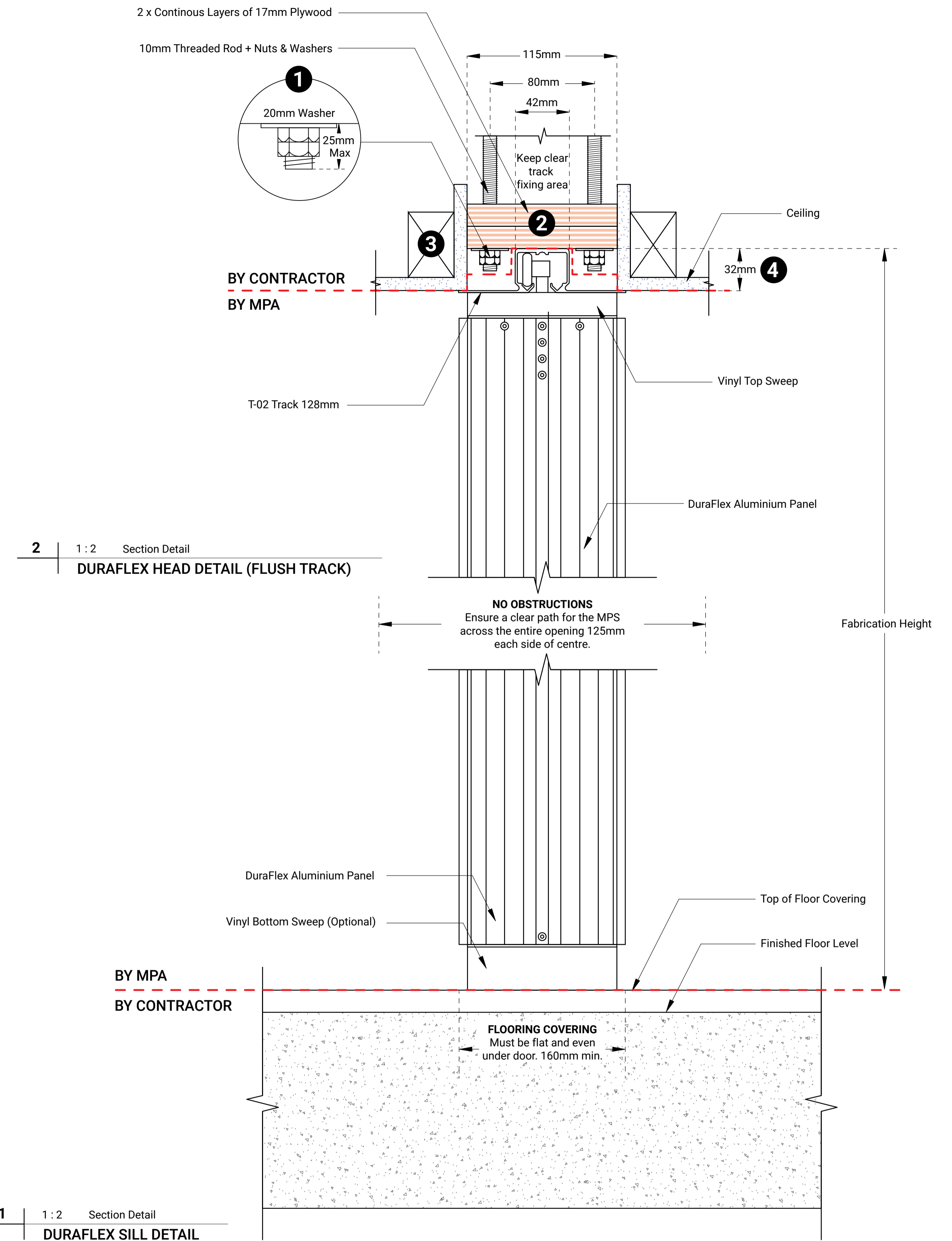
1. 10mm threaded rod with nuts and washers by main contractor.
Spacing: 600mm centres through opening, 300mm in stack depth areas.

NOTE: Threaded Rod is not necessary where adequate fixing of the ply is available. Ply must be fixed in a manner to support the weight of this door at 9kgm².

2. Two (2) Layers 17mm x 115mm continuous plywood, screwed and glued, to be parallel with floor. Maximum level tolerance of +/- 5mm.
By main contractor.

3. Ceiling grid to be self supported and not held up by MPA track.

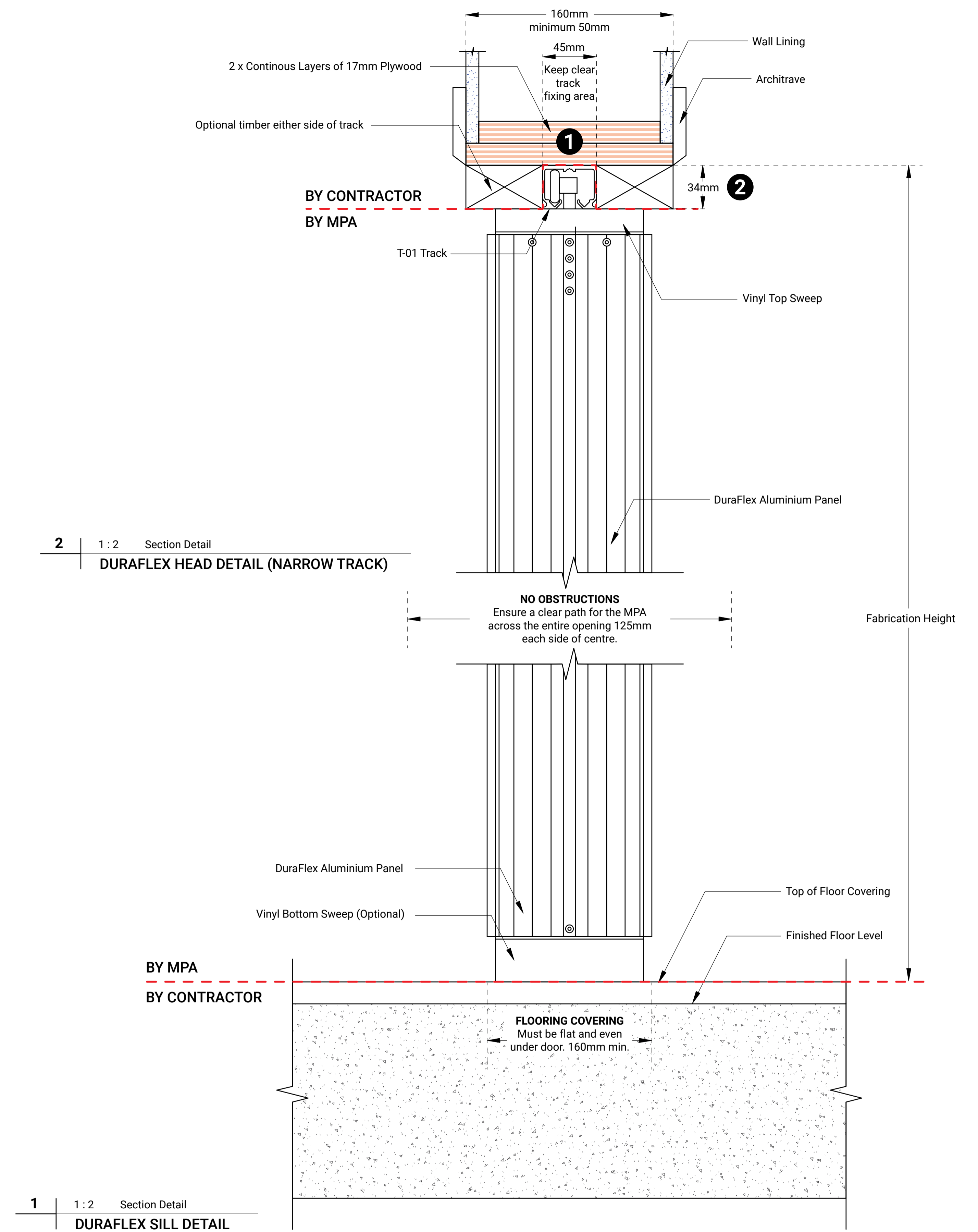
4. u/s of plywood to be recessed 32mm above ceiling across entire width of opening. This dimension is critical and must be constructed to the millimetre. No tolerance available on this 32mm.

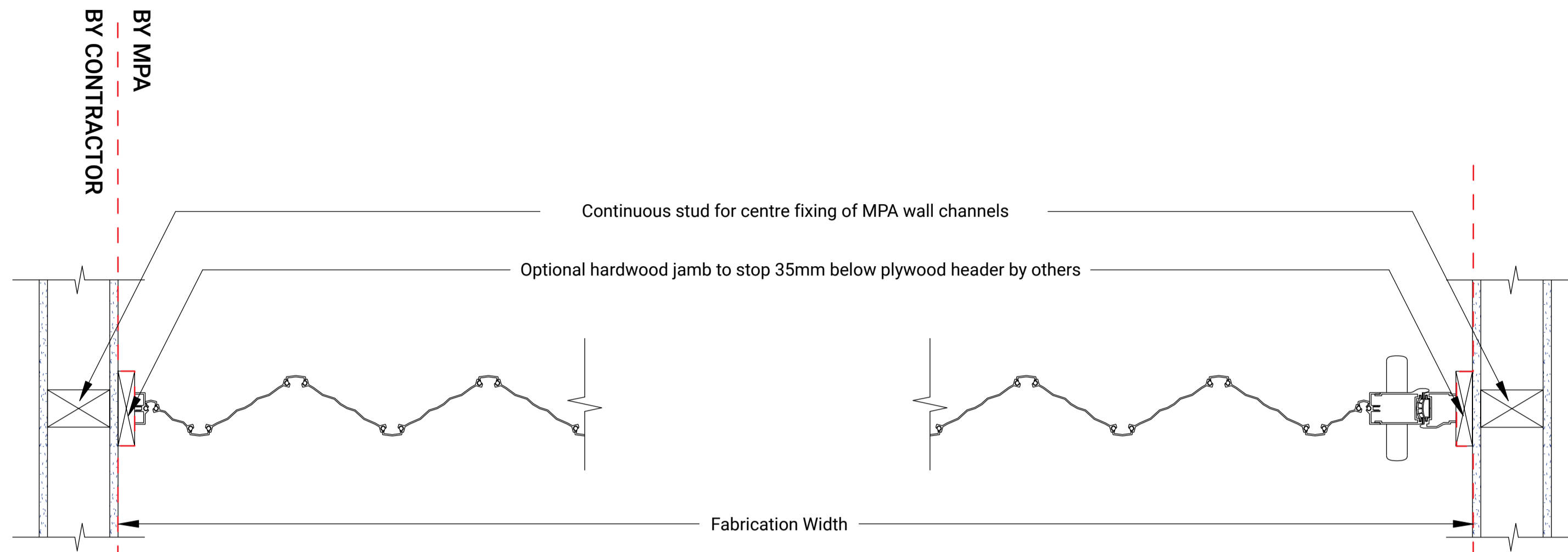


1. Plywood or Timber header must be fixed in a manner to support the weight of this door at 9kg m2. Header to remain parallel with the floor, maximum level of tolerance +/- 5mm.

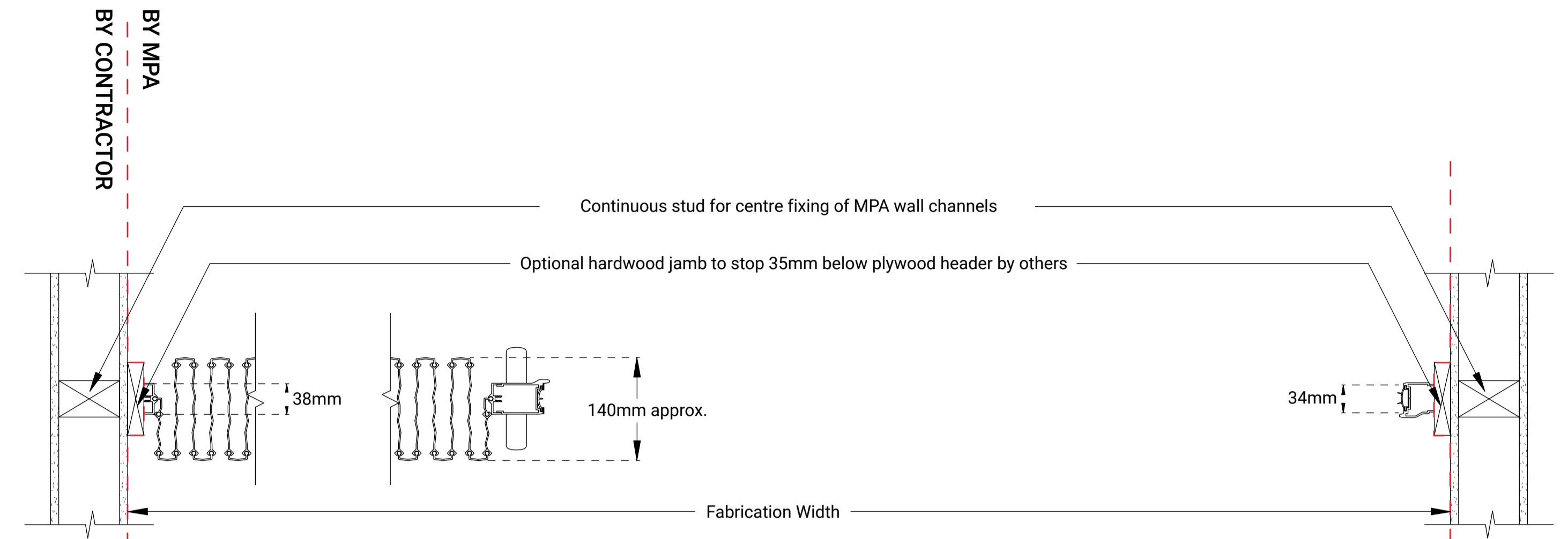
NOTE: Ensure there are extra header fixings in the Stack Depth Areas.

2. Optional wooden decorative trim to hide track if required "by others".

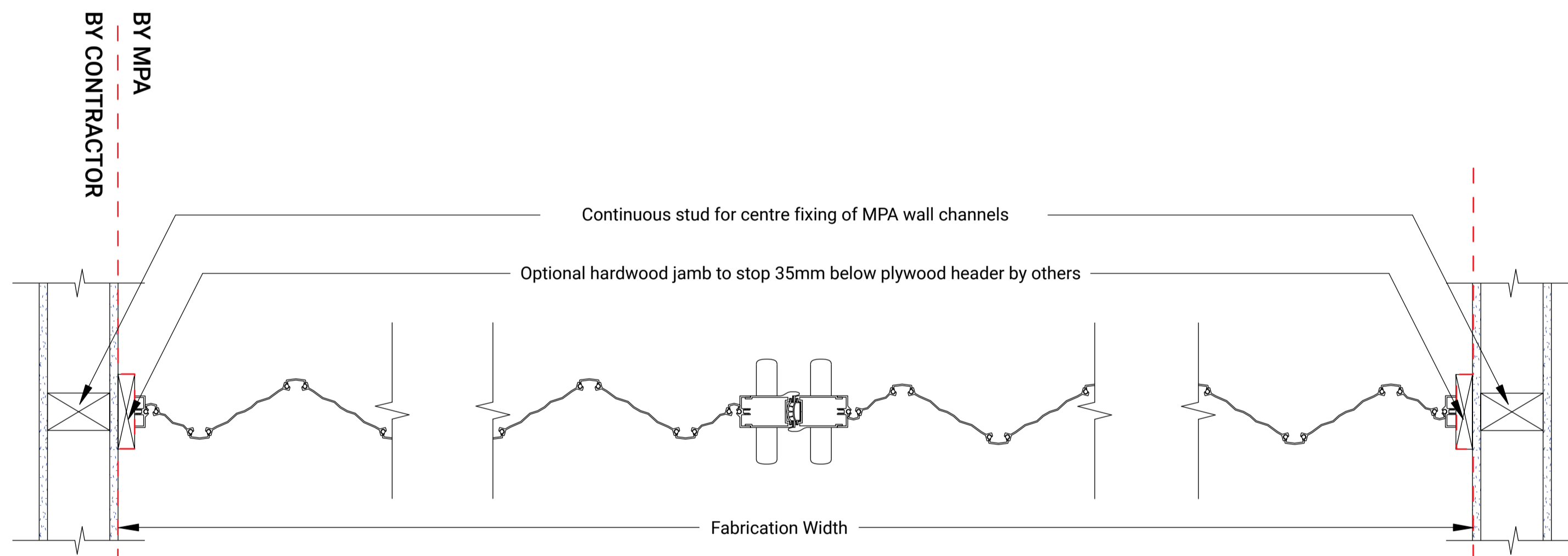




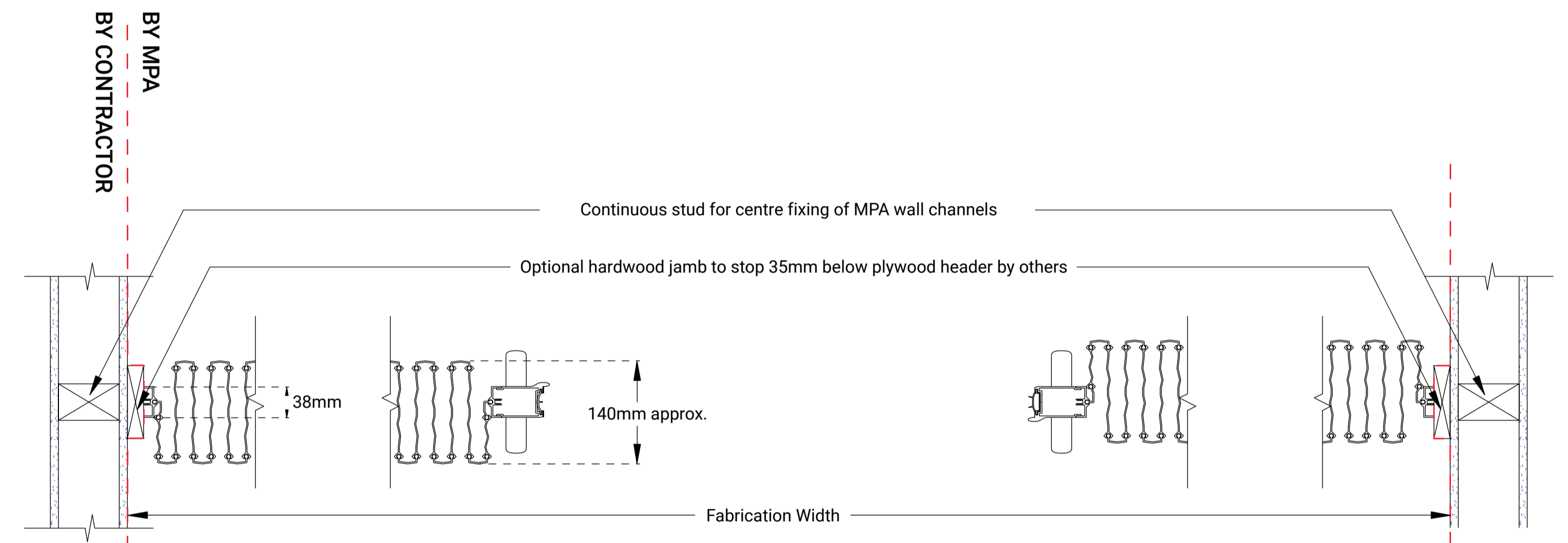
1 1:5 Plan Detail
SINGLE PARTING CLOSED



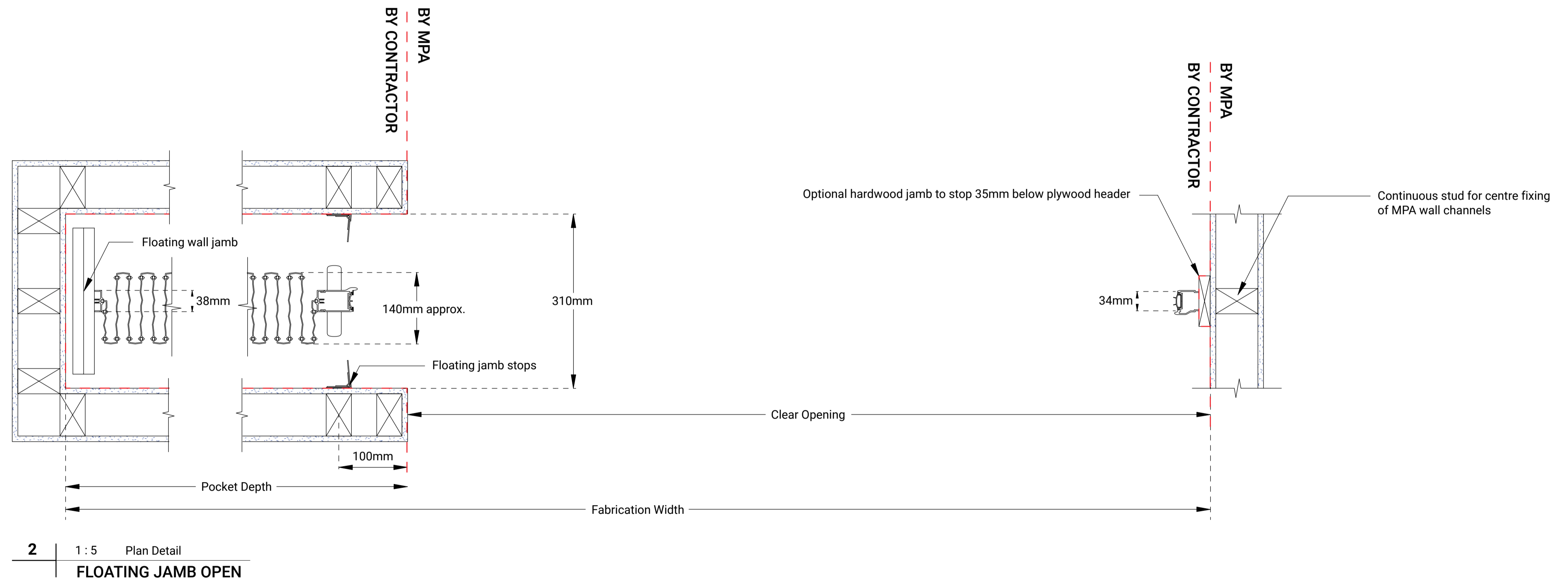
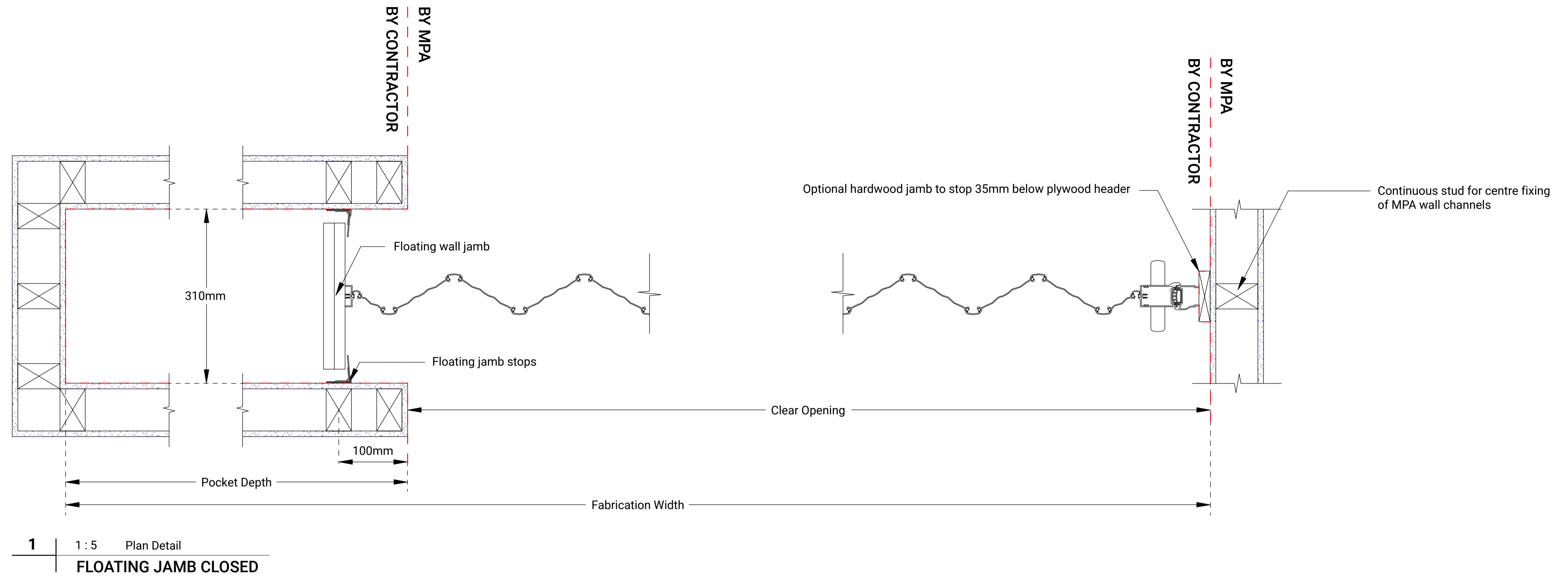
2 1:5 Plan Detail
SINGLE PARTING OPEN

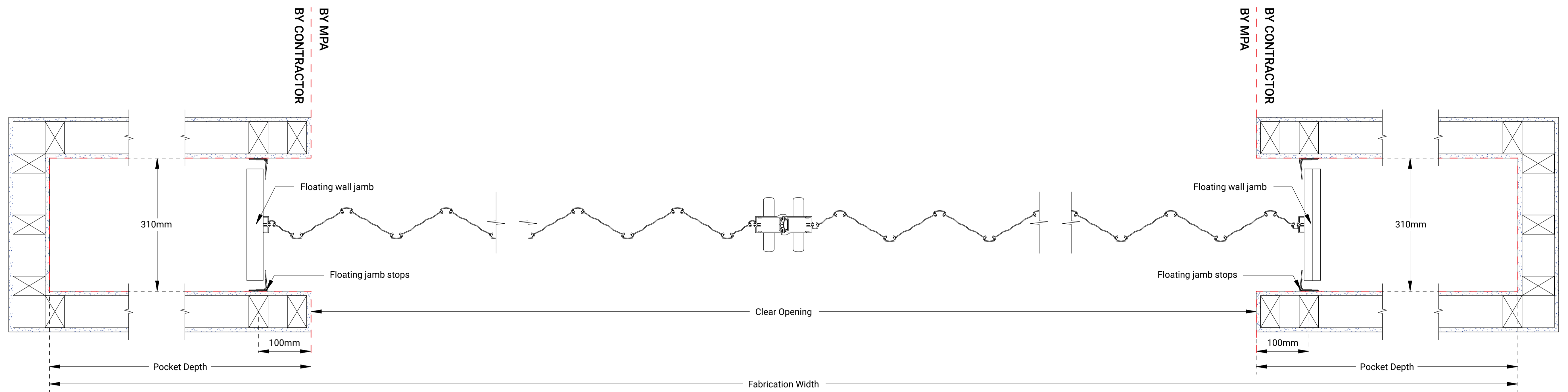


3 1:5 Plan Detail
BI-PARTING CLOSED

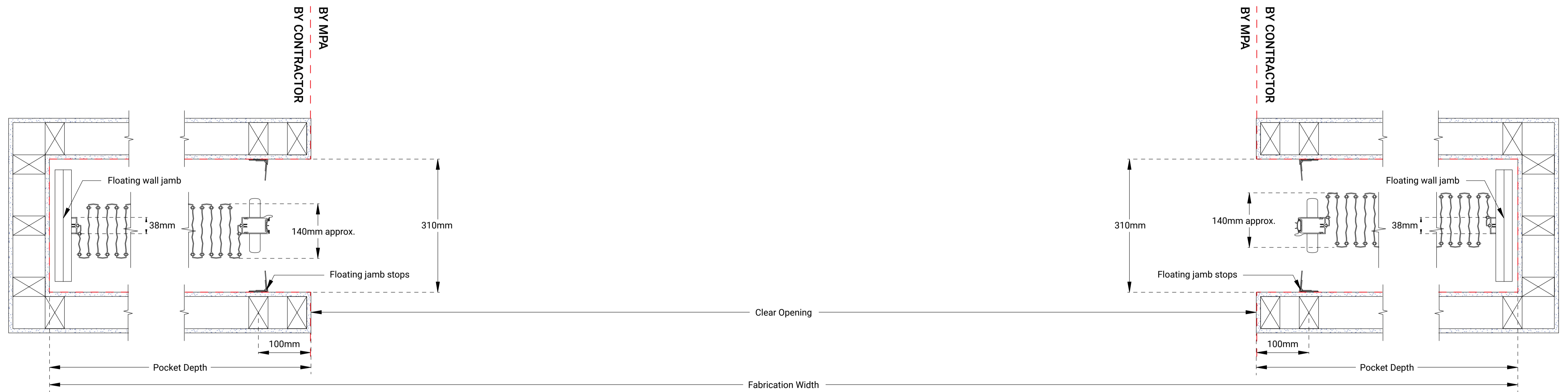


4 1:5 Plan Detail
BI-PARTING OPEN

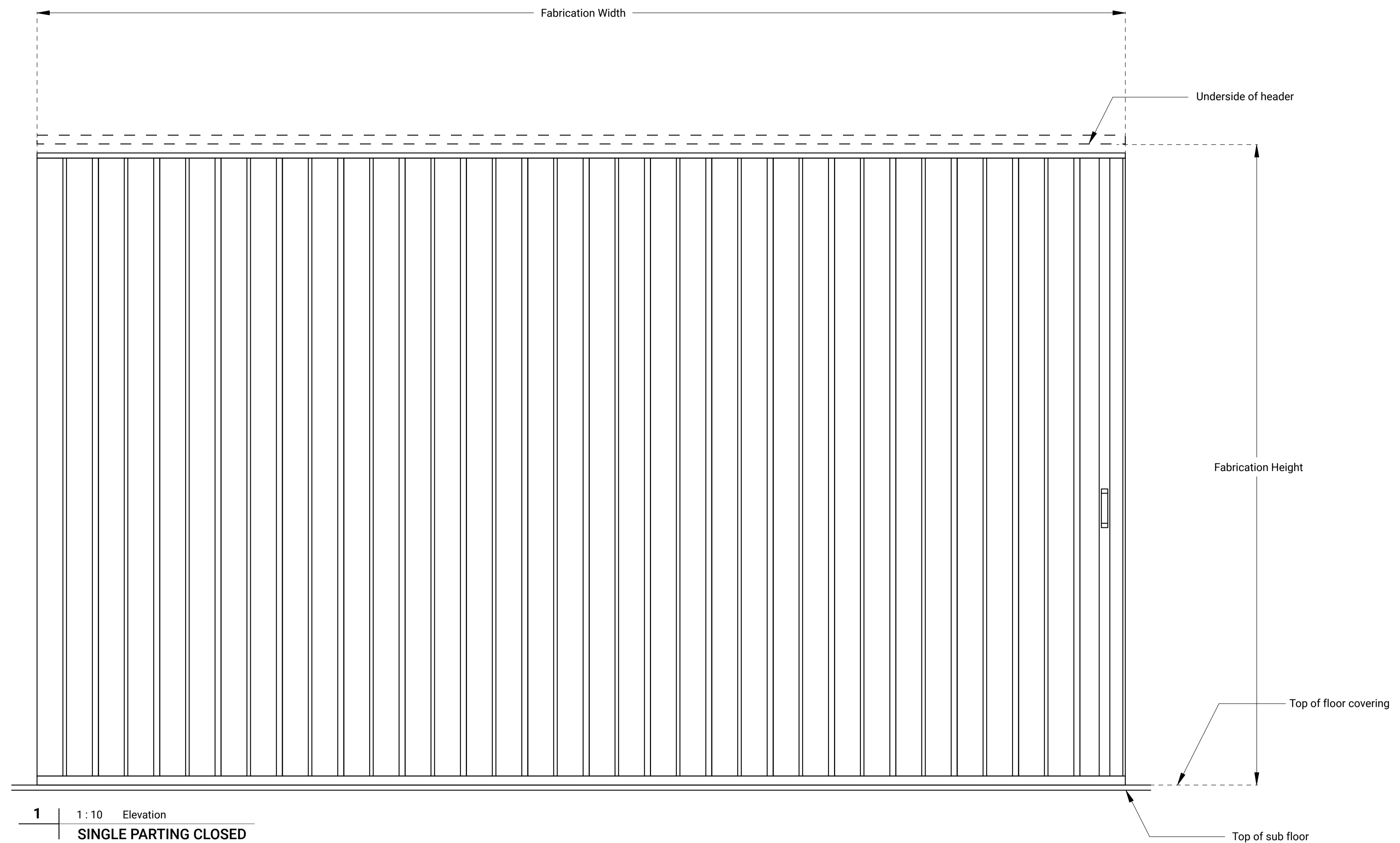


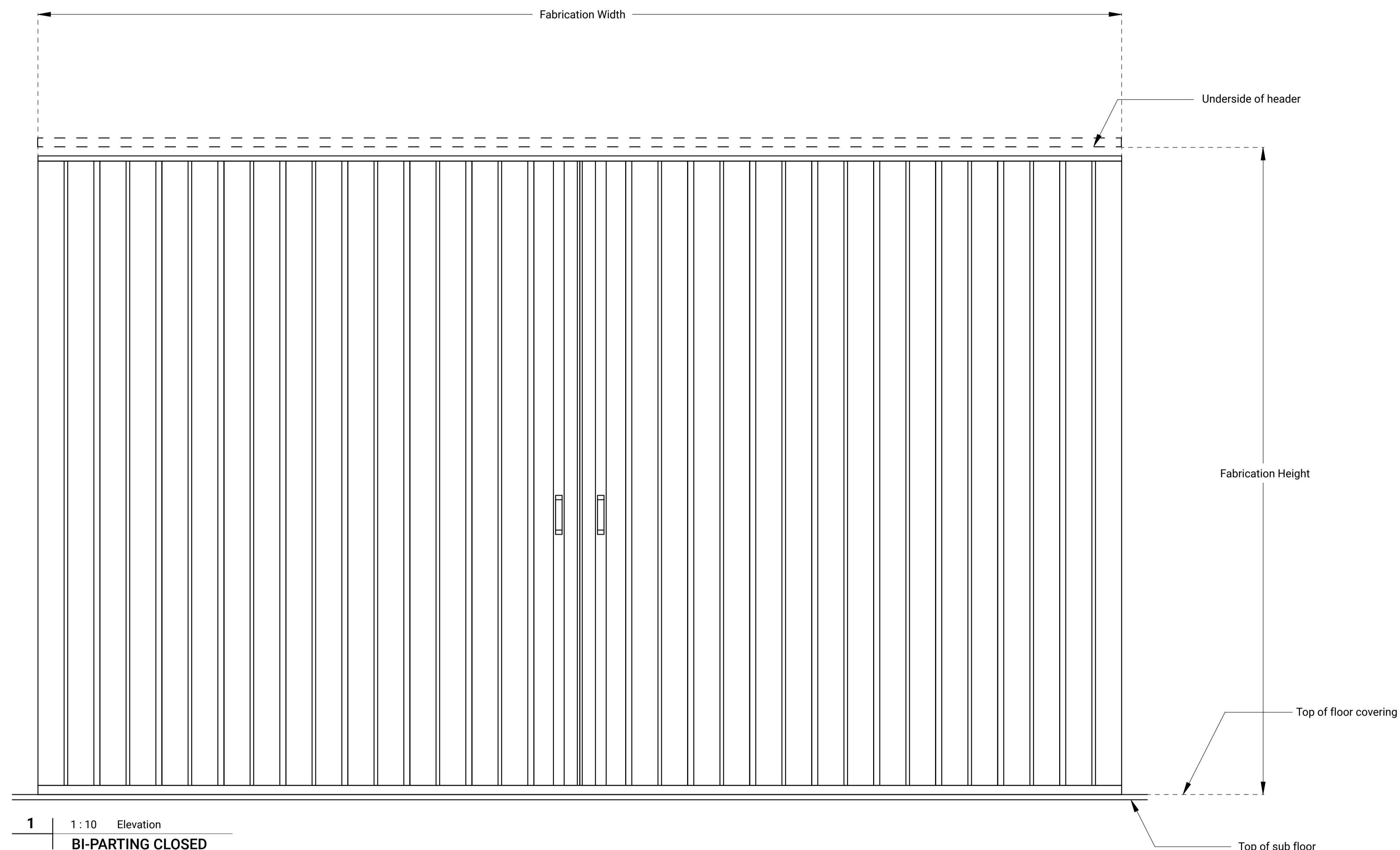


1 | 1:5 Plan Detail
FLOATING JAMB CLOSED



2 | 1:5 Plan Detail
FLOATING JAMB OPEN





1 | 1 : 10 Elevation
BI-PARTING CLOSED

